

Lower Mainland-Southwest Region

Month over Month Numbers

Total Building Permits

Permit values declined 8% in May to \$636.6 million compared to \$694.7 million in April 2013.

Non-residential Permits

Total non-residential permits climbed 22% to \$144.6 million from \$118.4 million in April.

- Institutional-government permits surged 129% to \$39.8 million from \$17.4 million.
- Industrial permits increased 138% to \$25.2 million from \$10.6 million in April.
- Commercial permits dropped 12% to \$79.6 million from \$90.5 million previously.

Residential Permits

Permit values decreased 15% to \$492.1 million from \$573.2 million in April.

Year over year Numbers

Total Building Permits

Total building permit values were down 25% to \$636.6 million from \$851.4 million in May 2012.

Non-residential Permits

Total non-residential permits were 55% lower at \$144.6 million compared to \$319.0 million last year.

- Industrial permits were 13% higher.
- Commercial permits were 6% lower.
- Institutional-government permits were 81% lower.

Residential Permits

Permit values were 8% lower than last year at \$492.1 million compared to \$532.4 million.

Year to date Numbers

Total Building Permits

Total building permit values were 6% lower at \$2.809 billion from \$2.980 billion in the first five months of this year compared to the same period last year.

Non-residential Permits

Total non-residential permits were 40% lower at \$661.6 million compared to \$1.104 billion last year.

- Commercial permits were 32% lower.
- Industrial permits were 13% lower.
- Institutional-government permits were 60% lower.

Residential Permits

Permit values were 14% higher than last year at \$2.147 billion compared to \$1.876 billion.

Vancouver CMA

Seasonally adjusted numbers **Total Building Permits**

Building permit values declined 13% to \$556.1 million seasonally adjusted in May 2013 compared to \$642.8 million in April.

Non-residential Permits

Non-residential building permits increased 17% to \$124.7 million from \$106.6 million in April.

- Commercial permits declined 9% to \$77.9 million.
- Industrial permits jumped 328% to \$20.5 million from \$4.8 million.
- Institutional-government permits rose 61% to \$26.3 million from \$16.3 million.

Residential Permits

Residential building permit values increased 47% to \$474.6 million seasonally adjusted.

The Month-over Month numbers

Total Building Permits

Total building permit values decreased 10% to \$581.7 million in May from \$648.1 million in April.

Non-residential Permits – same as seasonally adjusted results.

Residential Permits

Permit values declined 16% to \$457.1 million from \$541.6 million in April.

The Year-over-year Numbers

Total Building Permits

Building permit values were 28% lower to \$581.7 million from \$809.5 million last May.

Non-residential Permits

Non-residential permits were 59% lower to \$124.7 million from \$307.3 million one year ago.

- Commercial permits were 4% lower.
- Industrial permits were up 13%.
- Institutional-government permits were 87% lower than last year.

Residential Permits

Permit values were 9% lower to \$457.1 million from \$502.2 million last year.

The Year-to-date

Total Building Permits

Building permit values were 5% lower to \$2.618 billion from \$2.756 billion last January to May.

Non-residential Permits

Non-residential permits were 42% higher to \$600.2 million from \$1.028 billion one year ago.

- Commercial permits were 33% lower to \$394.5 million.
- Industrial permits were 16% lower to \$75.0 million from \$89.7 million.
- Institutional-government permits were 63% lower to \$130.7 million.

Residential Permits

Permit values were 17% higher to \$2.018 billion from \$1.728 million last year.

Abbotsford

Seasonally adjusted Numbers

Total Building permits

Building permits fell 21% to \$19.4 million from \$24.6 million in April.

Non-residential Permits

Non-residential permits increased 51% to \$6.9 million from \$4.6 million in April.

- Institutional-government permits issued totaled \$5.0 million compared to no permits in April.
- Industrial permits edged up 1% to \$1.6 million.
- Commercial permits dropped 89% to \$0.3 million from \$3.0 million in April.

Residential Permits

Residential building permits declined 38% to \$12.4 million in May from \$20.0 million in April.

The Month-over-Month Numbers

Total Building Permits

Total building permit values decreased 18% to \$20.4 million in May from \$24.8 million in April.

Non-residential Permits - same as seasonally adjusted results.

Residential Permits

Permit values dropped 70% to \$5.9 million from \$19.7 million in April.

The Year-over-Year Numbers

Total Building Permits

Permit values were down 57% to \$20.4 million from \$13.0 million in May 2012.

Non-Residential Permits

Total non-residential permits were up 31% to \$7.0 million compared to \$5.3 million last year.

- Institutional-government permits jumped 312% to \$5.0 million compared to \$1.2 million in May 2012.
- Industrial permits were 53% lower.
- Commercial permits were 48% lower.

Residential Permits

Residential permits were 17% lower to \$5.9 million from \$7.2 million.

The Year-to-Date Numbers

Total Building Permits

Permit values were 7% higher to \$76.6 million in January-May 2013 compared to \$71.6 million in the same period last year.

Non-Residential Permits

Total non-residential permits were 18% lower to \$23.0 million.

- Institutional-government permits were 29% lower to \$10.7 million compared to \$15.1 million last year.
-

- Commercial permits were 34% higher at \$6.7 million compared to \$5.0 million last year.
- Industrial permits were 28% lower to \$5.7 million.

Residential Permits

Residential permits were up 11% to \$44.3 million.

| Building Permits Issued – Lower Mainland-Southwest Region | | | | | | | |
|---|-----------|-------------------------|------------|------------|---------------------|-----------|-------|
| Period | Total | Non-Residential Permits | | | Residential Permits | | Units |
| | Permits | Total | Industrial | Commercial | Inst.-Govt. | Value | |
| (Dollars – Thousands) | | | | | | | |
| Apr-13 | 694,668 | 118,421 | 10,563 | 90,496 | 17,362 | 576,247 | 2,634 |
| May-13 | 636,647 | 144,550 | 25,160 | 79,615 | 39,775 | 492,097 | 1,674 |
| % change | -8 | 22 | 138 | -12 | 129 | -15 | -36 |
| May-12 | 851,424 | 318,986 | 22,252 | 84,775 | 211,959 | 532,438 | 2,441 |
| May-13 | 636,647 | 144,550 | 25,160 | 79,615 | 39,775 | 492,097 | 1,674 |
| % change | -25 | -55 | 13 | -6 | -81 | -8 | -31 |
| Jan-May-12 | 2,980,079 | 1,103,943 | 104,400 | 619,491 | 380,052 | 1,876,136 | 7,691 |
| Jan-May-13 | 2,808,730 | 661,556 | 90,828 | 418,203 | 152,525 | 2,147,174 | 8,919 |
| % change | -6 | -40 | -13 | -32 | -60 | 14 | 16 |

Source: Statistics Canada

| Seasonally Adjusted Building Permits Issued - Vancouver CMA | | | | | | | | | |
|---|---------|-------------------------|------------|------------|---------------------|---------|-------|-------|---------|
| Period | Total | Non-Residential Permits | | | Residential Permits | | | | |
| | Permits | Total | Industrial | Commercial | Inst.-Govt. | Value | Total | Units | Singles |
| (Dollars - Thousands) | | | | | | | | | |
| Dec-13 | 427,584 | 97,111 | 8,447 | 61,730 | 26,934 | 330,473 | 1,396 | 275 | 1,121 |
| Jan-13 | 531,333 | 124,627 | 18,589 | 53,912 | 52,126 | 406,706 | 1,677 | 258 | 1,419 |
| Feb-13 | 487,881 | 146,860 | 16,305 | 102,665 | 27,890 | 341,021 | 1,367 | 259 | 1,108 |
| Mar-13 | 428,014 | 97,487 | 14,839 | 74,570 | 8,078 | 330,527 | 1,408 | 224 | 1,184 |
| Apr-13 | 642,844 | 106,582 | 4,790 | 85,486 | 16,306 | 536,262 | 2,367 | 248 | 2,119 |
| May-13 | 556,108 | 124,673 | 20,500 | 77,889 | 26,284 | 431,435 | 1,528 | 201 | 1,327 |
| % Change May 13-Apr 13 | -13 | 17 | 328 | -9 | 61 | -20 | -35 | -19 | -37 |

| Building Permits Issued – Metro Vancouver | | | | | | | |
|---|-----------|-------------------------|------------|------------|-------------|---------------------|-------|
| | Total | Non-Residential Permits | | | | Residential Permits | |
| Period | Permits | Total | Industrial | Commercial | Inst.-Govt. | Value | Units |
| (Dollars – Thousands) | | | | | | | |
| Apr-13 | 648,145 | 106,582 | 4,790 | 85,486 | 16,306 | 541,563 | 2,393 |
| May-13 | 581,735 | 124,673 | 20,500 | 77,889 | 26,284 | 457,062 | 1,579 |
| % change | -10 | 17 | 328 | -9 | 61 | -16 | -34 |
| May-12 | 809,484 | 307,279 | 18,067 | 81,134 | 208,078 | 502,205 | 2,318 |
| May-13 | 581,735 | 124,673 | 20,500 | 77,889 | 26,284 | 457,062 | 1,579 |
| % change | -28 | -59 | 13 | -4 | -87 | -9 | -32 |
| Jan-May-12 | 2,756,004 | 1,027,983 | 89,673 | 588,502 | 349,808 | 1,728,021 | 7,037 |
| Jan-May-13 | 2,618,176 | 600,229 | 75,023 | 394,522 | 130,684 | 2,017,947 | 8,306 |
| % change | -5 | -42 | -16 | -33 | -63 | 17 | 18 |

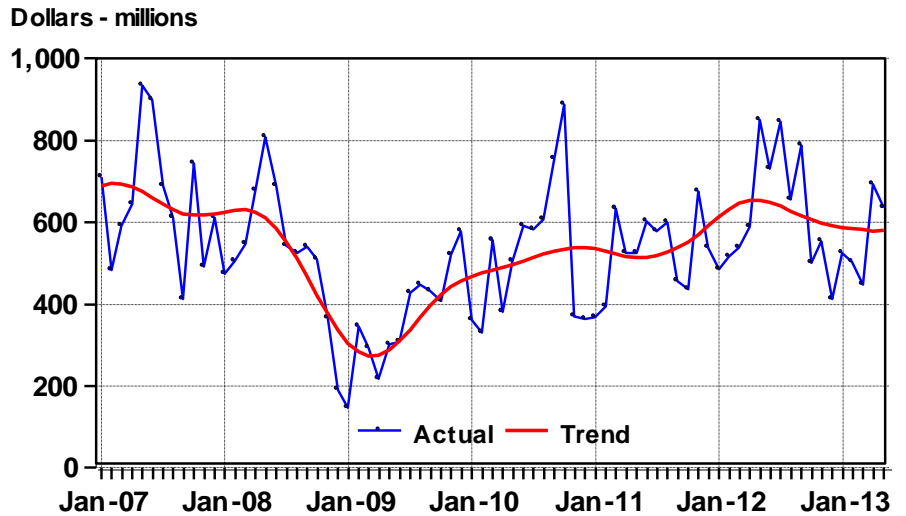
Source: Statistics Canada

| Seasonally Adjusted Building Permits Issued - Abbotsford CMA | | | | | | | | | |
|--|---------|-------------------------|------------|------------|-------------|---------------------|-------|---------|-----------|
| | Total | Non-Residential Permits | | | | Residential Permits | | | |
| Period | Permits | Total | Industrial | Commercial | Inst.-Govt. | Value | Total | | |
| (Dollars – Thousands) | | | | | | | Units | Singles | Multiples |
| Dec-13 | 18,789 | 6,768 | 2,049 | 4,558 | 161 | 12,021 | 90 | 18 | 72 |
| Jan-13 | 16,072 | 1,462 | 1,393 | 69 | 0 | 14,610 | 110 | 18 | 92 |
| Feb-13 | 6,355 | 2,730 | 30 | 450 | 2,250 | 3,625 | 17 | 15 | 2 |
| Mar-13 | 10,677 | 7,260 | 976 | 2,854 | 3,430 | 3,417 | 17 | 12 | 5 |
| Apr-13 | 24,562 | 4,606 | 1,624 | 2,982 | 0 | 19,956 | 184 | 16 | 168 |
| May-13 | 19,385 | 6,964 | 1,639 | 331 | 4,994 | 12,421 | 27 | 20 | 7 |
| % Change May 13- Apr 13 | -21 | 51 | 1 | -89 | N/A | -38 | -85 | 25 | -96 |

| Building Permits Issued – Abbotsford CMA | | | | | | | |
|--|---------------|-------------------------|------------|------------|-------------|---------------------|-------|
| Period | Total Permits | Non-Residential Permits | | | | Residential Permits | |
| | | Total | Industrial | Commercial | Inst.-Govt. | Value | Units |
| (Dollars – Thousands) | | | | | | | |
| Apr-13 | 24,758 | 4,606 | 1,624 | 2,982 | 0 | 19,674 | 186 |
| May-13 | 20,408 | 6,964 | 1,639 | 331 | 4,994 | 5,930 | 32 |
| % change | -18 | 51 | 1 | -89 | #DIV/0! | -70 | -83 |
| May-12 | 13,035 | 5,322 | 3,476 | 635 | 1,211 | 7,185 | 40 |
| May-13 | 20,408 | 6,964 | 1,639 | 331 | 4,994 | 5,930 | 32 |
| % change | 57 | 31 | -53 | -48 | 312 | -17 | -20 |
| Jan-May-12 | 71,590 | 27,959 | 7,857 | 4,980 | 15,122 | 39,902 | 224 |
| Jan-May-13 | 76,599 | 23,022 | 5,662 | 6,686 | 10,674 | 44,342 | 354 |
| % change | 7 | -18 | -28 | 34 | -29 | 11 | 58 |

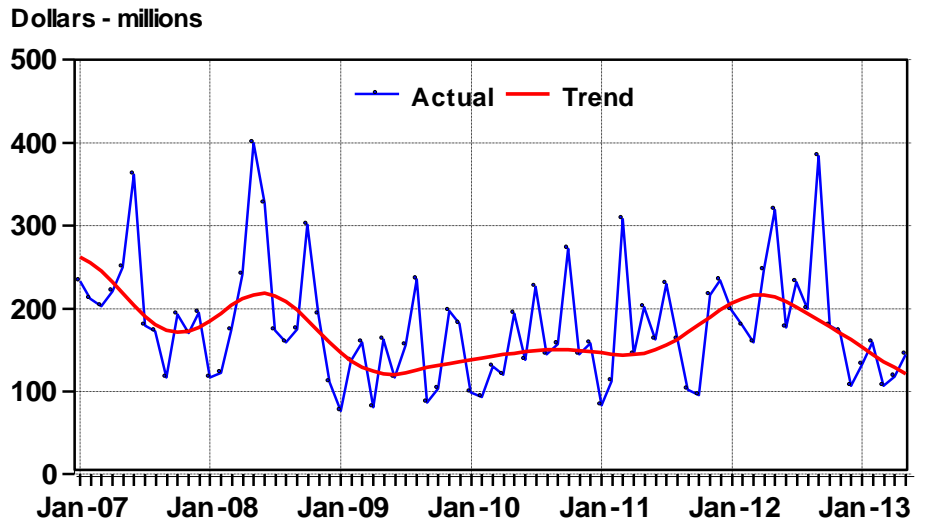
Source: Statistics Canada

Total Building Permits Issued,
Lower Mainland-Southwest Region
January 2007 - May 2013



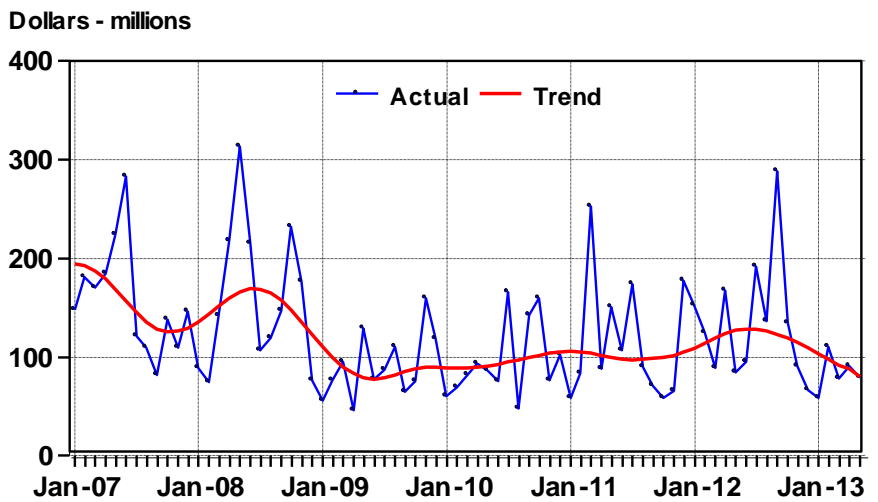
Source: Statistics Canada.

Non-residential Building Permits Issued, Lower Mainland-Southwest Region January 2007 - May 2013



Source: Statistics Canada.

Commercial Building Permits Issued, Lower Mainland-Southwest Region January 2007 - May 2013

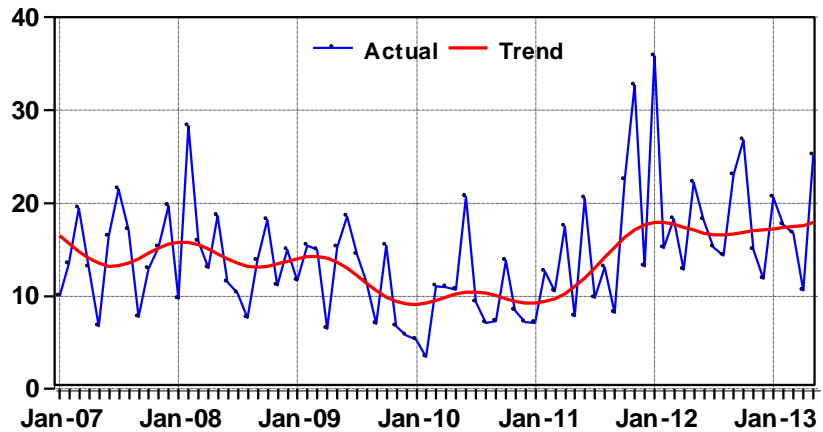


Source: Statistics Canada.

Industrial Building Permits Issued, Lower Mainland-Southwest Region

January 2007 - May 2013

Dollars - millions

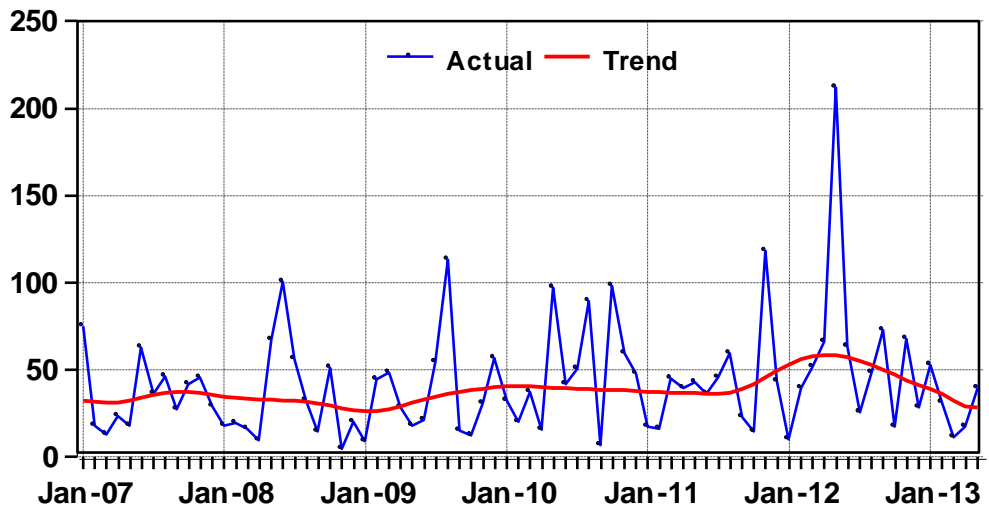


Source: Statistics Canada.

Institutional-Government Building Permits Issued, Lower Mainland-Southwest Region

January 2007 - May 2013

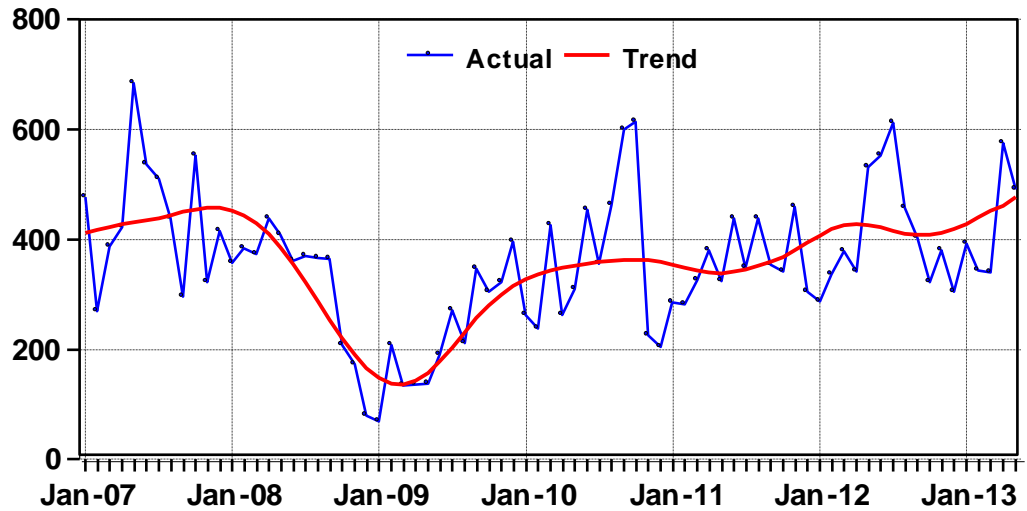
Dollars - millions



Source: Statistics Canada.

Residential Building Permits Issued, Lower Mainland-Southwest Region January 2007 - May 2013

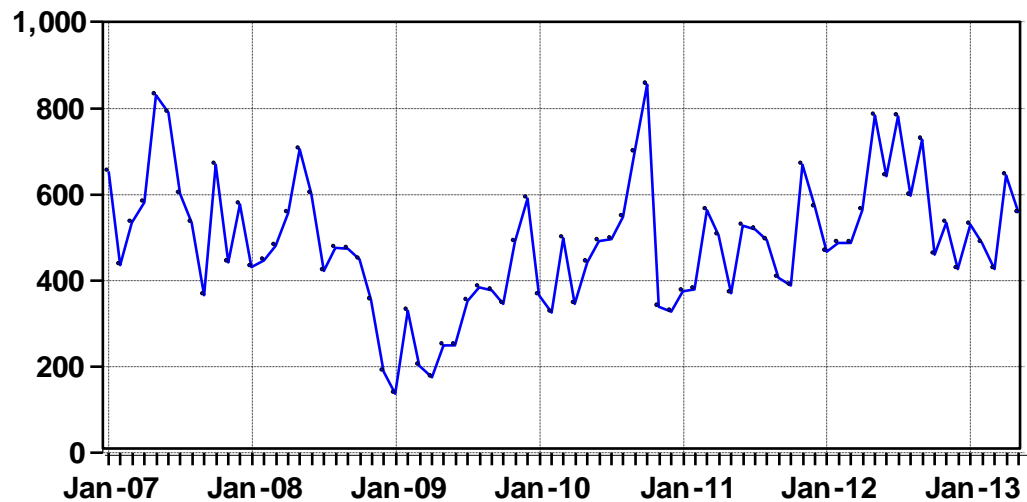
Dollars - millions



Source: Statistics Canada.

Total Building Permits Issued, Seasonally Adjusted, Metro Vancouver, January 2007 - May 2013

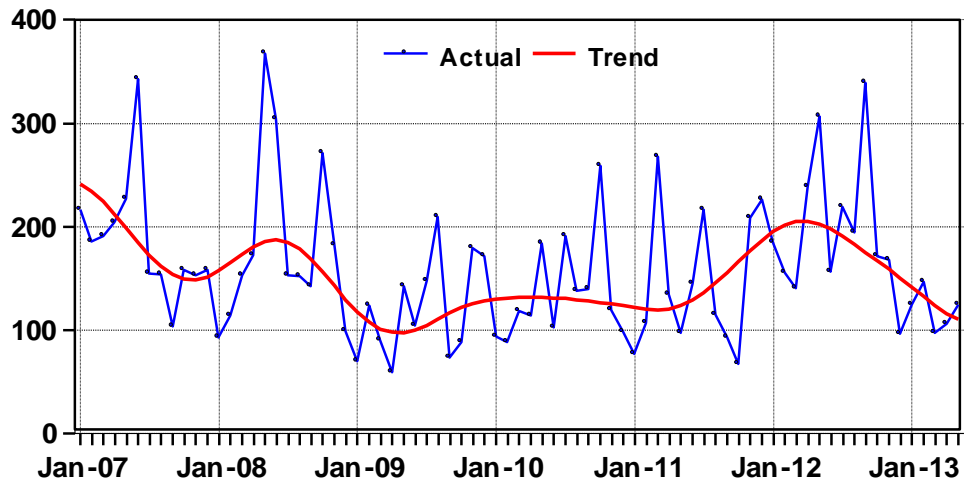
Dollars - millions



Source: Statistics Canada.

Non-residential Building Permits, Metro Vancouver January 2007 - May 2013

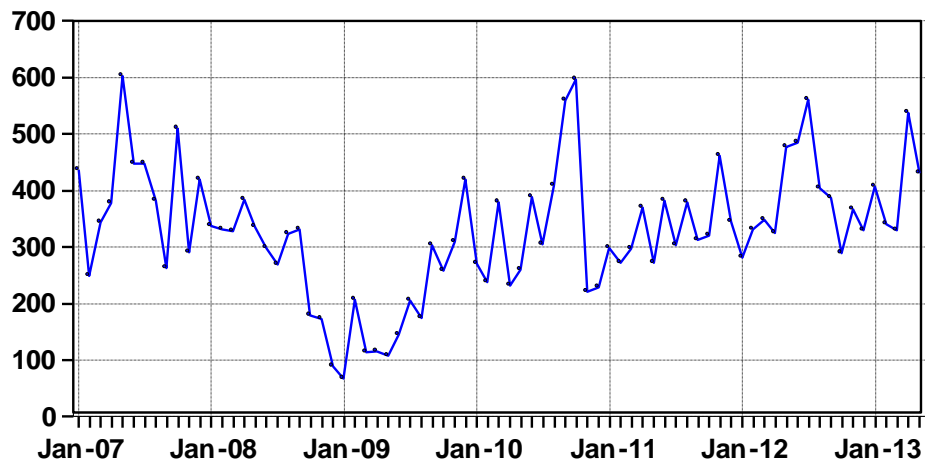
Dollars - millions



Source: Statistics Canada.

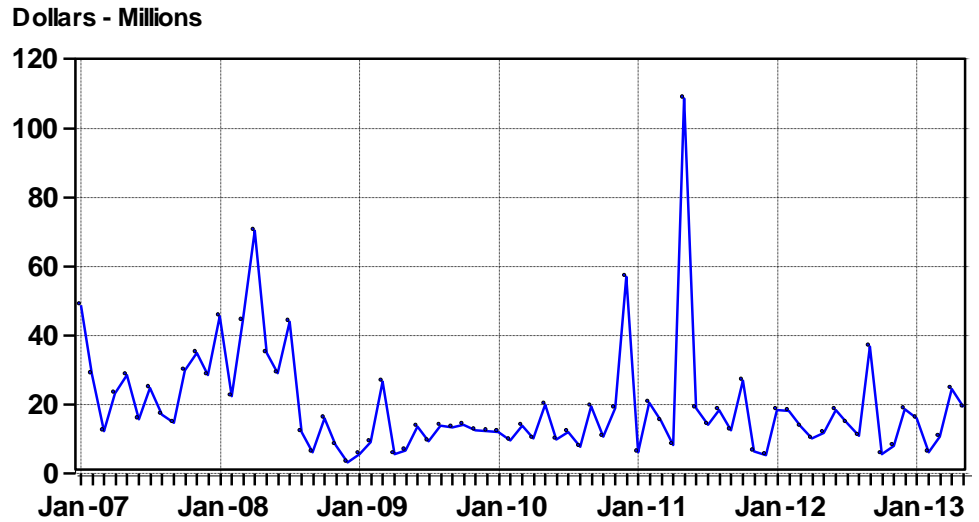
Residential Building Permits, Seasonally Adjusted, Metro Vancouver, January 2007 - May 2013

Dollars - millions



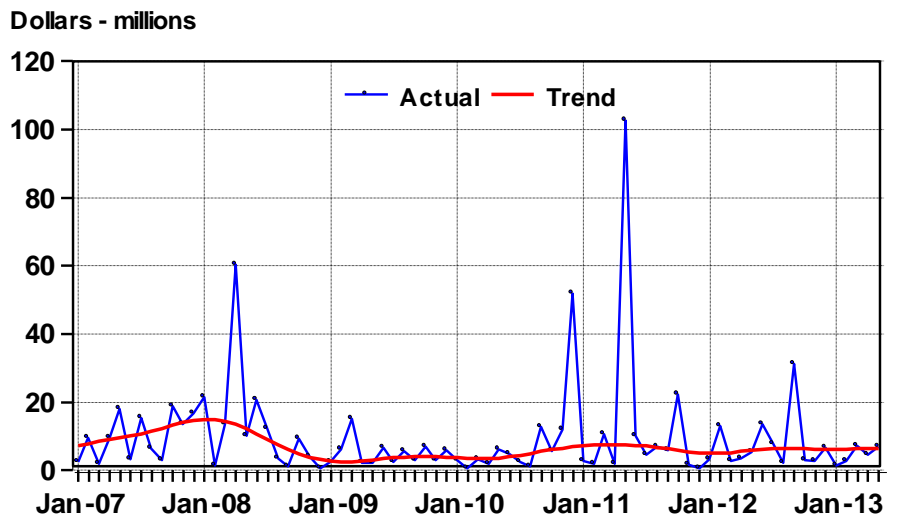
Source: Statistics Canada.

Total Building Permits Issued, Seasonally Adjusted, Abbotsford CMA January 2007 - May 2013



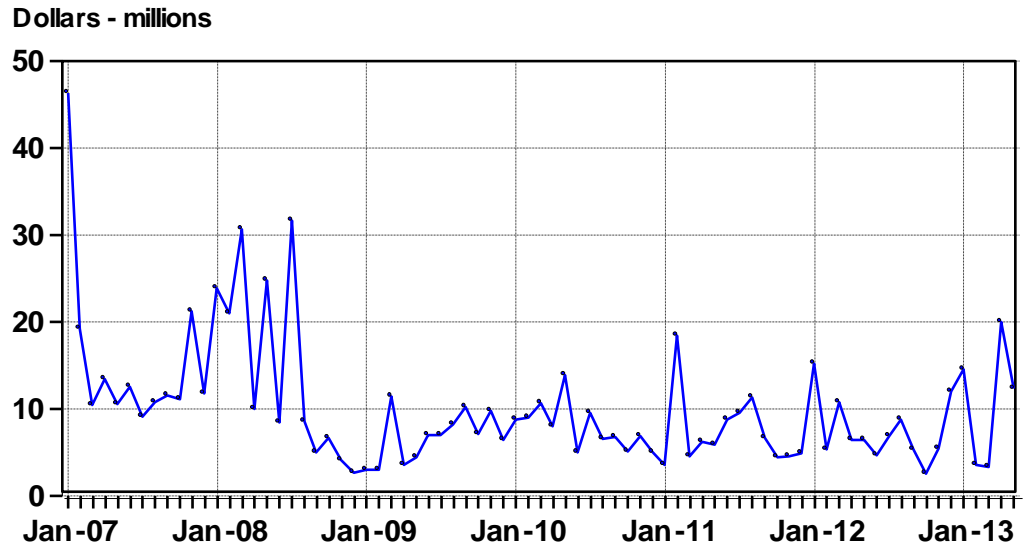
Source: Statistics Canada.

Non-residential Building Permits Issued, Abbotsford CMA January 2007 - May 2013



Source: Statistics Canada.

Residential Building Permits Issued,
Seasonally Adjusted, Abbotsford CMA
January 2007 - May 2013



Source: Statistics Canada.