

Lower Mainland-Southwest Region

Month over Month Numbers

Total Building Permits

Permit values fell 20% in July to \$542.6 million from \$675.9 million in June 2013.

Non-residential Permits

Total non-residential permits dropped 34% to \$139.9 million from \$212.8 million in June.

- Commercial permits fell 52% to \$81.8 million from \$171.3 million previously.
- Industrial permits jumped 100% to \$19.5 million from \$9.7 million in June.
- Institutional-government permits rose 21% to \$38.6 million.

Residential Permits

Permit values declined 13% to \$402.6 million from \$463.1 million in June.

Year over year Numbers

Total Building Permits

Total building permit values were 36% lower to \$542.6 million from \$845.3 million in July 2012.

Non-residential Permits

Total non-residential permits were 40% lower to \$139.9 million compared to \$232.5 million last year.

- Commercial permits were 57% lower.
- Industrial permits were 28% higher.
- Institutional-government permits were higher by 50%.

Residential Permits

Permit values were 34% lower than last year at \$402.6 million compared to \$612.8 million.

Year to date Numbers

Total Building Permits

Total building permit values were 12% lower at \$4.03 billion from \$4.556 billion in the first seven months of this year compared to the same period last year.

Non-residential Permits

Total non-residential permits were 33% lower at \$1.014 billion compared to \$1.514 billion last year.

- Commercial permits were 26% lower.
- Industrial permits were 13% lower.
- Institutional-government permits were down 53%.

Residential Permits

Permit values were 1% lower than last year at \$3.016 billion compared to \$3.042 billion.

Vancouver CMA

Seasonally adjusted numbers **Total Building Permits**

Building permit values fell 26% to \$467.3 million seasonally adjusted in July 2013 compared to \$628.6 million in June 2013.

Non-residential Permits

Non-residential building permits dropped 37% to \$125.5 million from \$198.55 million in June.

- Commercial permits fell 53% to \$78.6 million.
- Institutional-government permits rose 39% to \$33.9 million from \$24.3 million.
- Industrial permits increased 86% to \$13.0 million from \$7.0 million.

Residential Permits

Residential building permit values decreased 21% to \$341.7 million seasonally adjusted.

The Month-over Month numbers

Total Building Permits

Total building permit values decreased 22% to \$500.2 million in July from \$643.8 million in June.

Non-residential Permits – same as seasonally adjusted results.

Residential Permits

Permit values declined 16% to \$374.7 million from \$445.3 million in June.

The Year-over-year Numbers

Total Building Permits

Building permit values were 38% lower to \$500.2 million from \$806.9 million last July.

Non-residential Permits

Non-residential permits were up down 43% to \$125.5 million from \$219.4 million one year ago.

- Commercial permits were 57% lower.
- Industrial permits were 5% higher.
- Institutional-government permits were 43% higher than last year.

Residential Permits

Permit values were 36% lower to \$374.7 million from \$587.5 million last year.

The Year-to-date

Total Building Permits

Building permit values were 11% lower to \$3.762 billion from \$4.236 billion last January to July.

Non-residential Permits

Non-residential permits were 34% lower to \$924.1 million from \$1.404 billion one year ago.

- Commercial permits were 25% lower to \$640.2 million.
- Industrial permits were 18% lower at \$95.0 million.
- Institutional-government permits were 56% lower than last year.

Residential Permits

Permit values were even with last year at \$2.838 billion.

Abbotsford

Seasonally adjusted Numbers

Total Building permits

Building permits declined 13% to \$12.0 million from \$13.8 million in June.

Non-residential Permits

Non-residential permits dropped 26% to \$7.8 million from \$10.5 million in June.

- Commercial permits plummeted 82% to \$0.4 million from \$2.1 million.
- Industrial permits shot up 205% to \$3.1 million from \$1.0 million.
- Institutional-government permits fell 42% to \$4.3 million from \$7.4 million.

Residential Permits

Residential building permits climb 31% to \$4.2 million from \$3.2 million in June.

The Month-over-Month Numbers

Total Building Permits

Total building permit values decreased 8% to \$12.8 million in July from \$14.0 million in June.

Non-residential Permits - same as seasonally adjusted results.

Residential Permits

Permit values increased 65% to \$4.7 million from \$2.8 million.

The Year-over-Year Numbers

Total Building Permits

Permit values were down 17% to \$12.8 million from \$15.4 million in July 2012.

Non-Residential Permits

Total non-residential permits were 1% lower to \$7.8 million compared to \$7.9 million last year.

- Commercial permits were 94% lower at \$0.4 million.
- Industrial permits were up 247% to \$3.1 million from \$0.9 million.
- Institutional-government permits were 912% higher to \$4.3 million from \$0.4 million last year.

Residential Permits

Residential permits were 33% lower to \$4.7 million from \$7.0 million.

The Year-to-Date Numbers

Total Building Permits

Permit values were down 3% to \$103.4 in January-July 2013 compared to \$106.3 million in the same period last year.

Non-Residential Permits

Total non-residential permits were 17% lower to \$41.4 million.

- Commercial permits were 50% lower to \$9.2 million.
- Industrial permits were up 6% to \$9.8 million.
- Institutional-government permits were 2% higher to \$22.3 million.

Residential Permits

Residential permits were even with last year at \$51.9 million.

Building Permits Issued – Lower Mainland-Southwest Region							
	Total	Non-Residential Permits			Residential Permits		
Period	Permits	Total	Industrial	Commercial	Inst.-Govt.	Value	Units
(Dollars – Thousands)							
Jun-13	675,883	212,812	9,735	171,264	31,813	463,071	2,207
Jul-13	542,559	139,947	19,517	81,801	38,629	402,612	1,642
% change	-20	-34	100	-52	21	-13	-26
Jul-12	845,298	232,516	15,253	191,572	25,691	612,782	2,510
Jul-13	542,559	139,947	19,517	81,801	38,629	402,612	1,642
% change	-36	-40	28	-57	50	-34	-35
Jan-Jul-12	4,555,668	1,513,733	137,887	906,379	469,467	3,041,935	12,477
Jan-Jul-13	4,030,312	1,013,957	120,237	670,753	222,967	3,016,355	12,777
% change	-12	-33	-13	-26	-53	-1	2

Source: Statistics Canada

Seasonally Adjusted Building Permits Issued - Vancouver CMA									
	Total	Non-Residential Permits			Residential Permits				
Period	Permits	Total	Industrial	Commercial	Inst.-Govt.	Value	Total		
(Dollars - Thousands)							Units	Singles	Multiples
Feb-13	487,881	146,860	16,305	102,665	27,890	341,021	1,367	259	1,108
Mar-13	428,014	97,487	14,839	74,570	8,078	330,527	1,408	224	1,184
Apr-13	642,844	106,582	4,790	85,486	16,306	536,262	2,367	248	2,119
May-13	558,170	124,455	20,457	77,714	26,284	433,715	1,529	202	1,327
Jun-13	628,624	198,545	6,986	167,231	24,328	430,079	2,127	226	1,901
Jul-13	467,261	125,543	13,024	78,590	33,929	341,718	1,442	251	1,191
% Change Jul 13- Jun 13	-26	-37	86	-53	39	-21	-32	11	-37

Building Permits Issued – Metro Vancouver							
Period	Total	Non-Residential Permits			Residential Permits		
	Permits	Total	Industrial	Commercial	Inst.-Govt.	Value	Units
(Dollars – Thousands)							
Jun-13	643,821	198,545	6,986	167,231	24,328	445,276	2,150
Jul-13	500,212	125,543	13,024	78,590	33,929	374,669	1,528
% change	-22	-37	86	-53	39	-16	-29
Jul-12	806,906	219,359	12,436	183,235	23,688	587,547	2,405
Jul-13	500,212	125,543	13,024	78,590	33,929	374,669	1,528
% change	-38	-43	5	-57	43	-36	-36
Jan-Jul-12	4,235,989	1,403,811	116,217	857,170	430,424	2,832,178	11,548
Jan-Jul-13	3,762,388	924,099	94,990	640,168	188,941	2,838,289	11,984
% change	-11	-34	-18	-25	-56	0	4

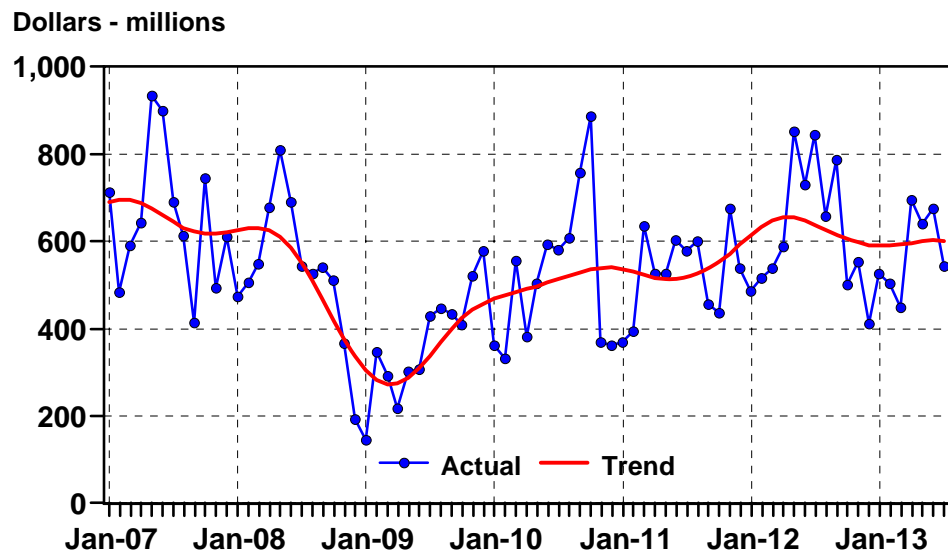
Source: Statistics Canada

Seasonally Adjusted Building Permits Issued - Abbotsford CMA									
Period	Total	Non-Residential Permits			Residential Permits				
	Permits	Total	Industrial	Commercial	Inst.-Govt.	Value	Total	Units	Singles
(Dollars – Thousands)							Units	Singles	Multiples
Feb-12	6,355	2,730	30	450	2,250	3,625	17	15	2
Mar-12	10,677	7,260	976	2,854	3,430	3,417	17	12	5
Apr-12	24,562	4,606	1,624	2,982	0	19,956	184	16	168
May-12	19,462	6,964	1,639	331	4,994	12,498	27	20	7
Jun-12	13,758	10,538	1,024	2,159	7,355	3,220	18	6	12
Jul-12	12,016	7,805	3,127	379	4,299	4,211	21	13	8
% Change Jul 12- Jun 12	-13	-26	205	-82	-42	31	17	117	-33

Building Permits Issued – Abbotsford CMA							
	Total	Non-Residential Permits			Residential Permits		
Period	Permits	Total	Industrial	Commercial	Inst.-Govt.	Value	Units
(Dollars – Thousands)							
Jun-13	13,989	10,538	1,024	2,159	7,355	2,849	19
Jul-13	12,838	7,805	3,127	379	4,299	4,697	26
% change	-8	-26	205	-82	-42	65	37
Jul-12	15,442	7,906	901	6,580	425	7,014	34
Jul-13	12,838	7,805	3,127	379	4,299	4,697	26
% change	-17	-1	247	-94	912	-33	-24
Jan-Jul-12	106,287	49,593	9,244	18,378	21,971	51,813	288
Jan-Jul-13	103,426	41,365	9,813	9,224	22,328	51,888	399
% change	-3	-17	6	-50	2	0	39

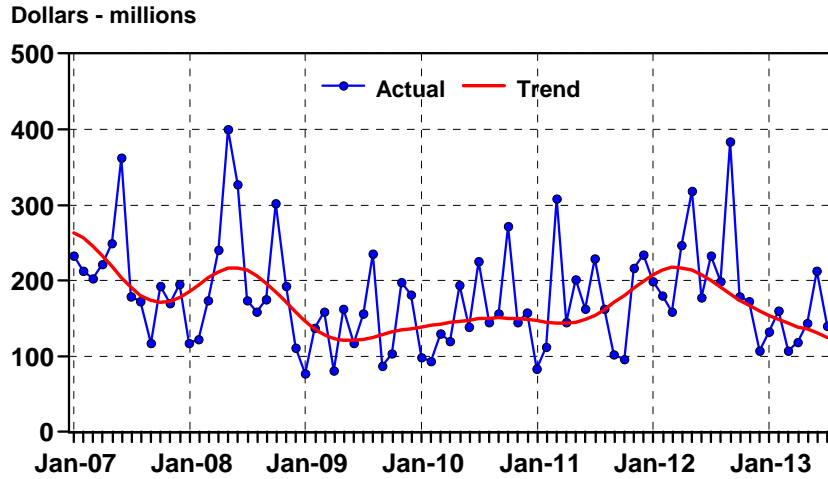
Source: Statistics Canada

Total Building Permits Issued,
Lower Mainland-Southwest Region
January 2007 - July 2013



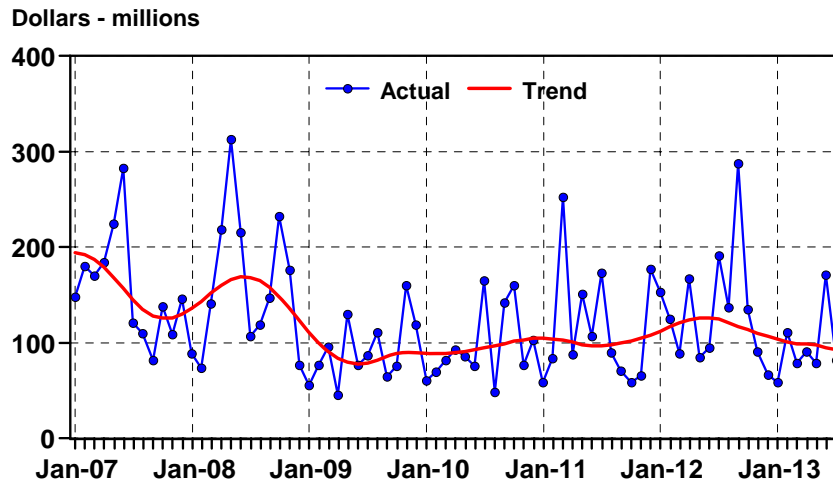
Source: Statistics Canada.

Non-residential Building Permits Issued, Lower Mainland-Southwest Region January 2007 - July 2013



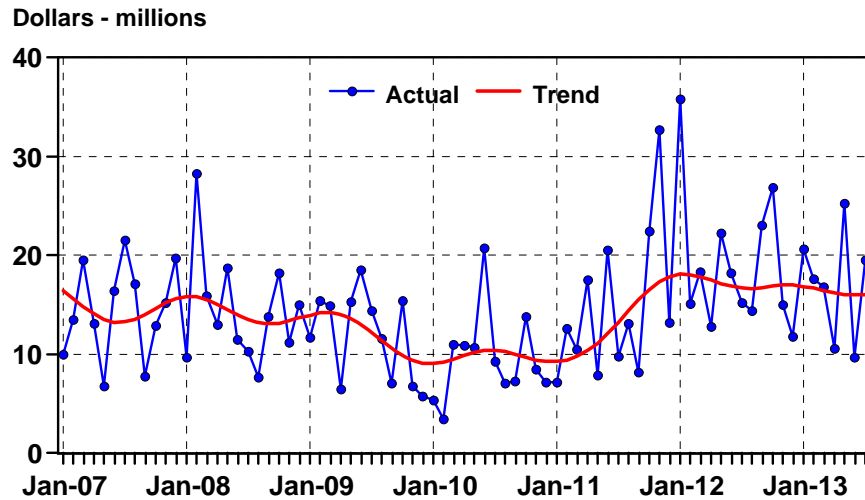
Source: Statistics Canada.

Commercial Building Permits Issued, Lower Mainland-Southwest Region January 2007 - July 2013



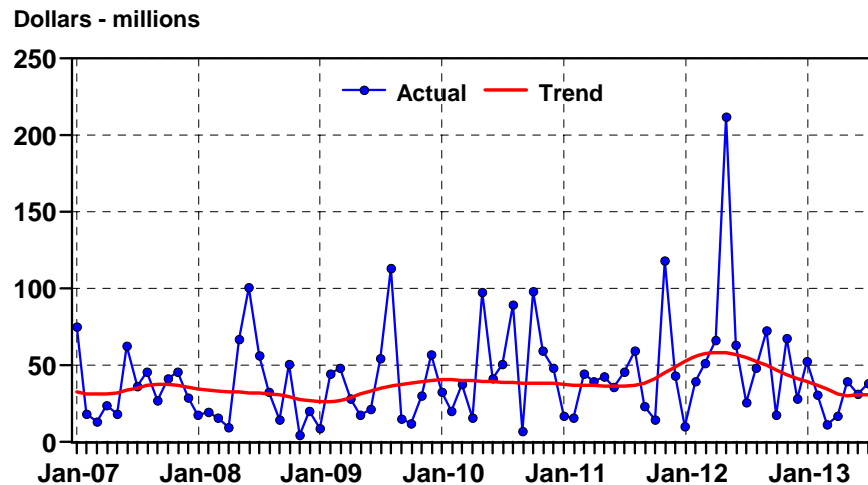
Source: Statistics Canada.

Industrial Building Permits Issued, Lower Mainland-Southwest Region January 2007 - July 2013



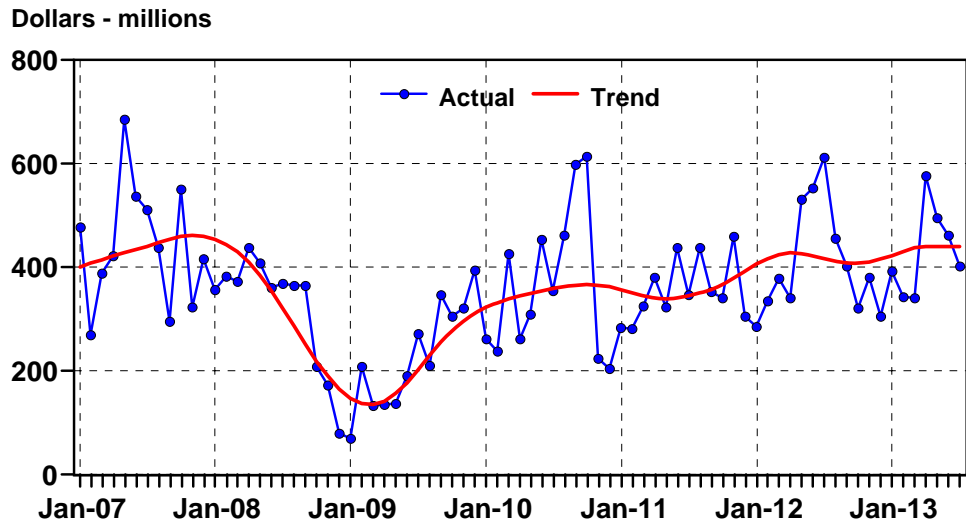
Source: Statistics Canada.

Institutional-Government Building Permits Issued, Lower Mainland-Southwest Region January 2007 - July 2013



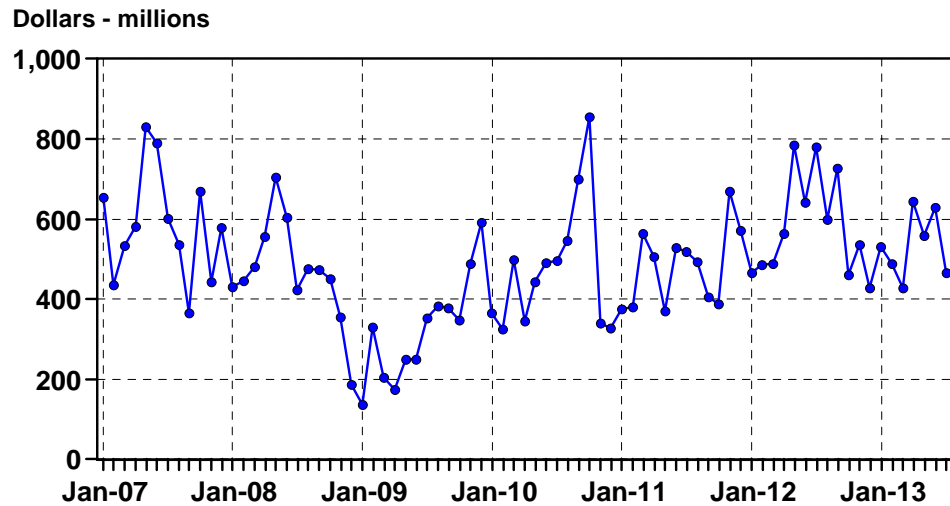
Source: Statistics Canada.

Residential Building Permits Issued, Lower Mainland-Southwest Region January 2007 - July 2013



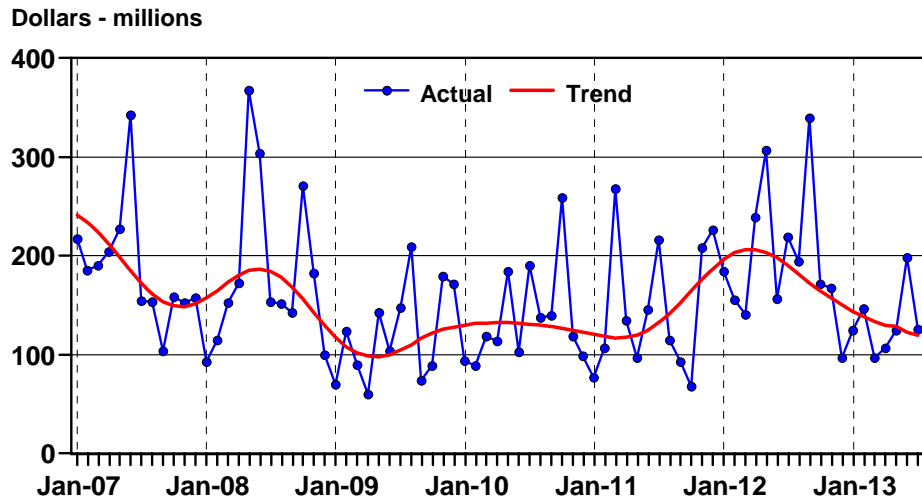
Source: Statistics Canada.

Total Building Permits Issued, Seasonally Adjusted, Metro Vancouver, January 2007 - July 2013



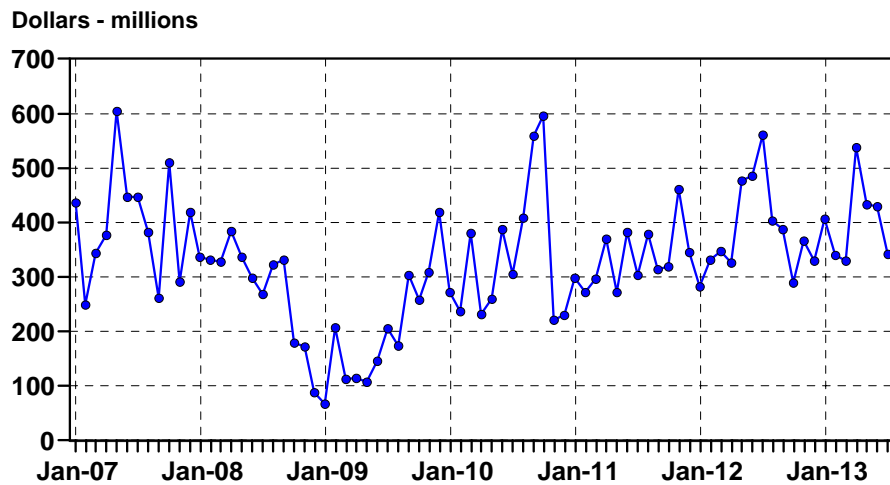
Source: Statistics Canada.

Non-residential Building Permits, Metro Vancouver January 2007 - July 2013



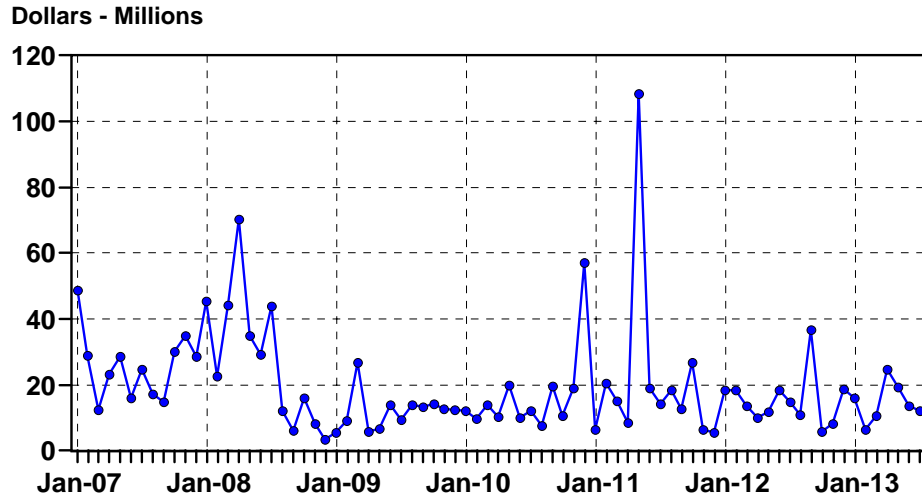
Source: Statistics Canada.

Residential Building Permits, Seasonally Adjusted, Metro Vancouver, January 2007 - July 2013



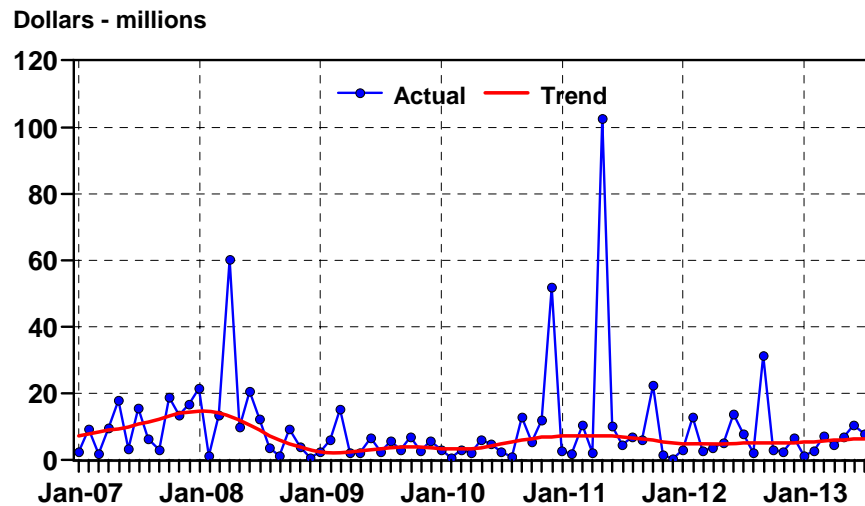
Source: Statistics Canada.

Total Building Permits Issued, Seasonally Adjusted, Abbotsford CMA January 2007 - July 2013



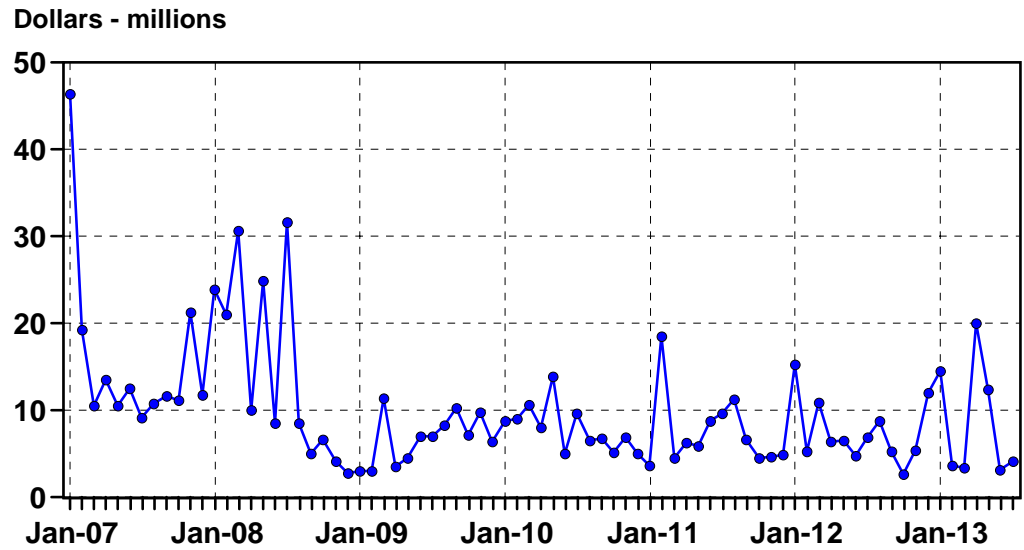
Source: Statistics Canada.

Non-residential Building Permits Issued, Abbotsford CMA January 2007 - July 2013



Source: Statistics Canada.

Residential Building Permits Issued,
Seasonally Adjusted, Abbotsford CMA
January 2007 - July 2013



Source: Statistics Canada.