

Lower Mainland-Southwest Region

Month over Month Numbers

Total Building Permits

Permits rose 10% in August to \$643.8 million from \$587.8 million in July 2013.

Non-residential Permits

Total non-residential permits slipped 3% to \$170.1 million from \$175.7 million in July.

- Commercial permits jumped 52% to \$129.1 million from \$84.8 million previously.
- Institutional-government permits fell 47% to \$23.9 million.
- Industrial permits plunged 63% to \$17.1 million from \$45.7 million in July.

Residential Permits

Permit values increased 15% to \$473.7 million from \$412.1 million in July.

Year over year Numbers

Total Building Permits

Total building permit values were 2% lower to \$643.8 million from \$656.9 million in August 2012.

Non-residential Permits

Total non-residential permits were 15% lower to \$170.1 million compared to \$199.6 million last year.

- Commercial permits were 6% lower.
- Industrial permits were up 18%.
- Institutional-government permits were down by 51%.

Residential Permits

Permit values were 4% higher than last year at \$473.7 million compared to \$457.3 million.

Year to date Numbers

Total Building Permits

Total building permit values were 9% lower at \$4.719 billion from \$5.213 billion in the first eight months of this year compared to the same period last year.

Non-residential Permits

Total non-residential permits were 29% lower at \$1.22 billion compared to \$1.713 billion last year.

- Commercial permits were 23% lower.
- Industrial permits were 7% higher.
- Institutional-government permits were 51% lower.

Residential Permits

Permit values were equal to last year at \$3.5 billion.

Vancouver CMA

Seasonally adjusted numbers Total Building Permits

Building permit values rose 14% to \$582.8 million seasonally adjusted in August 2013 compared to \$513.0 million in July.

Non-residential Permits

Non-residential building permits edged up 1% to \$162.1 million from \$161.3 million in July.

- Commercial permits jumped 56% to \$127.2 million.
- Institutional-government permits fell 44% to \$22.8 million from \$40.5 million.
- Industrial permits plunged 69% to \$12.1 million from \$39.2 million.

Residential Permits

Residential building permit values increased 20% to \$420.6 million seasonally adjusted.

The Month-over Month numbers

Total Building Permits

Total building permit values increased 10% to \$598.2 million in August from \$545.5 million in July.

Non-residential Permits – same as seasonally adjusted results.

Residential Permits

Permit values rose 13% to \$436.0 million from \$384.2 million in July.

The Year-over-year Numbers

Total Building Permits

Building permit values were 3% lower to \$598.2 million from \$619.8 million last August.

Non-residential Permits

Non-residential permits were 17% lower to \$162.1 million from \$194.5 million one year ago.

- Commercial permits were 5% lower.
- Industrial permits were 6% lower.
- Institutional-government permits were 52% lower than last year.

Residential Permits

Permit values were up 3% to \$436.0 million from \$425.3 million last year.

The Year-to-date

Total Building Permits

Building permit values were 9% lower to \$4.406 billion from \$4.856 billion last January to August.

Non-residential Permits

Non-residential permits were 30% lower to \$1.122 billion from \$1.598 billion one year ago.

- Commercial permits were 22% lower at \$991.5 million.
-

- Industrial permits were 3% lower at \$133.3 million.
- Institutional-government permits were 54% lower than last year.

Residential Permits

Permit values were 1% higher to \$3.284 billion.

Abbotsford

Seasonally adjusted Numbers

Total Building permits

Building permits edged up 2% to \$12.3 million from \$12.0 million in July.

Non-residential Permits

Non-residential permits plummeted 86% to \$1.1 million from \$7.8 million in July.

- Commercial permits rose 90% to \$0.7 million from \$0.4 million.
- Industrial permits dived 89% to \$0.4 million from \$3.1 million previously.
- No institutional-government building permits were issued in August compared to \$4.3 million in July.

Residential Permits

Residential building permits increased 165% to \$11.2 million from \$4.2 million in July.

The Month-over-Month Numbers

Total Building Permits

Total building permit values slid 1% to \$12.7 million in August from \$12.8 million in July.

Non-residential Permits - same as seasonally adjusted results.

Residential Permits

Permit values were 145% higher to \$11.5 million.

The Year-over-Year Numbers

Total Building Permits

Permit values were up 9% to \$12.7 million from \$11.7 million in August 2012.

Non-Residential Permits

Total non-residential permits were 52% lower to \$1.1 million compared to \$2.2 million last year.

- Commercial permits were low but up 25% plunge to \$0.7 million.
- Industrial permits were off 36% to \$0.4 million.
- No institutional-government permits were issued in August versus \$1.1 million last year.

Residential Permits

Residential permits were 84% higher at \$11.5 million compared to \$6.2 million.

*The Year-to-Date
Numbers*

Total Building Permits

Permit values were 2% lower to \$116.2 million in January-August 2013 compared to \$118.0 million in the same period last year.

Non-Residential Permits

Total non-residential permits were 18% lower at \$42.4 million.

- Commercial permits were 48% lower at \$9.9 million.
- Industrial permits were up 4% to \$10.2 million.
- Institutional-government permits were 3% lower at \$22.3 million compared to \$23.1 million last year.

Residential Permits

Residential permits were up 9% to \$63.4 million.

Building Permits Issued – Lower Mainland-Southwest Region							
Period	Total	Non-Residential Permits			Residential Permits		Units
	Permits	Total	Industrial	Commercial	Inst.-Govt.	Value	
(Dollars – Thousands)							
Jul-13	587,828	175,681	45,717	84,772	45,192	412,147	1,681
Aug-13	643,851	170,114	17,060	129,109	23,945	473,737	1,919
% change	10	-3	-63	52	-47	15	14
Aug-12	656,926	199,627	14,407	136,806	48,414	457,299	1,867
Aug-13	643,851	170,114	17,060	129,109	23,945	473,737	1,919
% change	-2	-15	18	-6	-51	4	3
Jan-Aug-12	5,212,594	1,713,360	152,294	1,043,185	517,881	3,499,234	14,344
Jan-Aug-13	4,719,432	1,219,805	163,497	802,833	253,475	3,499,627	14,735
% change	-9	-29	7	-23	-51	0	3

Source: Statistics Canada

Seasonally Adjusted Building Permits Issued - Vancouver CMA									
Period	Total	Non-Residential Permits			Residential Permits				
	Permits	Total	Industrial	Commercial	Inst.-Govt.	Value	Total	Units	Singles
(Dollars - Thousands)									
Mar-13	428,014	97,487	14,839	74,570	8,078	330,527	1,408	224	1,184
Apr-13	642,844	106,582	4,790	85,486	16,306	536,262	2,367	248	2,119
May-13	558,170	124,455	20,457	77,714	26,284	433,715	1,529	202	1,327
Jun-13	628,624	198,545	6,986	167,231	24,328	430,079	2,127	226	1,901
Jul-13	513,000	161,277	39,224	81,561	40,492	351,723	1,479	251	1,228
Aug-13	582,792	162,145	12,135	127,250	22,760	420,647	1,765	215	1,550
% Change Aug 13-Jul 13	14	1	-69	56	-44	20	19	-14	26

Building Permits Issued – Metro Vancouver							
	Total	Non-Residential Permits				Residential Permits	
Period	Permits	Total	Industrial	Commercial	Inst.-Govt.	Value	Units
(Dollars – Thousands)							
Jul-13	545,481	161,277	39,224	81,561	40,492	384,204	1,567
Aug-13	598,199	162,145	12,135	127,250	22,760	436,054	1,794
% change	10	1	-69	56	-44	13	14
Aug-12	619,811	194,522	12,960	134,351	47,211	425,289	1,722
Aug-13	598,199	162,145	12,135	127,250	22,760	436,054	1,794
% change	-3	-17	-6	-5	-52	3	4
Jan-Aug-12	4,855,800	1,598,333	129,177	991,521	477,635	3,257,467	13,270
Jan-Aug-13	4,405,856	1,121,978	133,325	770,389	218,264	3,283,878	13,817
% change	-9	-30	3	-22	-54	1	4

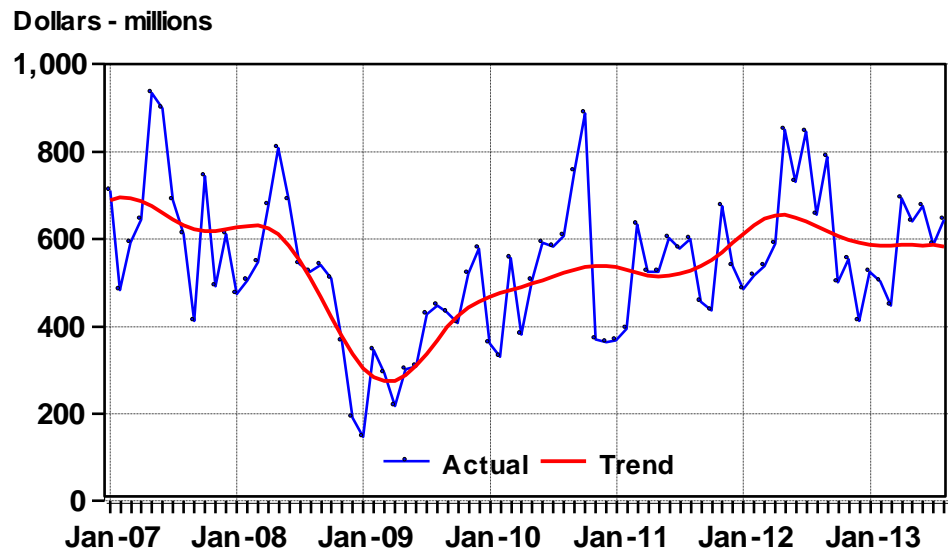
Source: Statistics Canada

Seasonally Adjusted Building Permits Issued - Abbotsford CMA									
	Total	Non-Residential Permits				Residential Permits			
Period	Permits	Total	Industrial	Commercial	Inst.-Govt.	Value	Total		
(Dollars – Thousands)									
Mar-13	10,677	7,260	976	2,854	3,430	3,417	17	12	5
Apr-13	24,562	4,606	1,624	2,982	0	19,956	184	16	168
May-13	19,462	6,964	1,639	331	4,994	12,498	27	20	7
Jun-13	13,758	10,538	1,024	2,159	7,355	3,220	18	6	12
Jul-13	12,032	7,805	3,127	379	4,299	4,227	21	13	8
Aug-13	12,284	1,071	350	721	0	11,213	68	18	50
% Change Aug 13-Jul 13	2	-86	-89	90	-100	165	224	38	525

Building Permits Issued – Abbotsford CMA							
	Total	Non-Residential Permits				Residential Permits	
Period	Permits	Total	Industrial	Commercial	Inst.-Govt.	Value	Units
(Dollars – Thousands)							
Jul-13	12,838	7,805	3,127	379	4,299	4,697	26
Aug-13	12,749	1,071	350	721	0	11,496	70
% change	-1	-86	-89	90	-100	145	169
Aug-12	11,703	2,221	550	575	1,096	6,234	56
Aug-13	12,749	1,071	350	721	0	11,496	70
% change	9	-52	-36	25	-100	84	25
Jan-Aug-12	117,990	51,814	9,794	18,953	23,067	58,047	344
Jan-Aug-13	116,175	42,436	10,163	9,945	22,328	63,384	469
% change	-2	-18	4	-48	-3	9	36

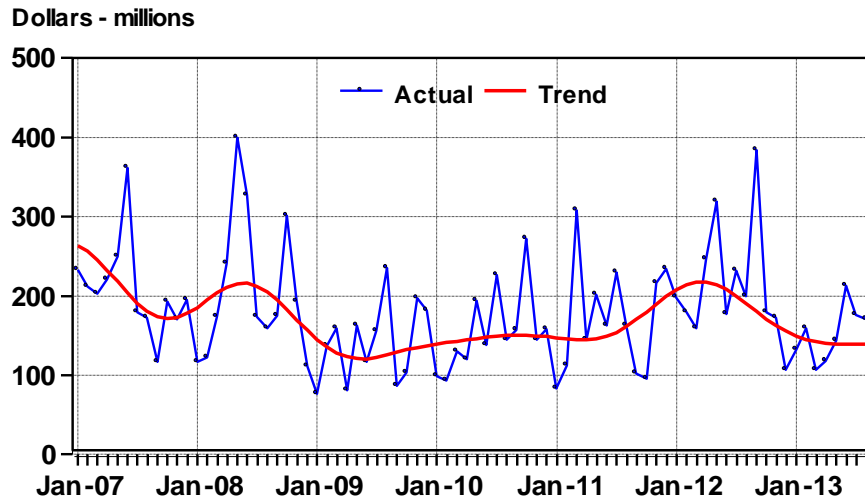
Source: Statistics Canada

Total Building Permits Issued,
Lower Mainland-Southwest Region
January 2007 - August 2013



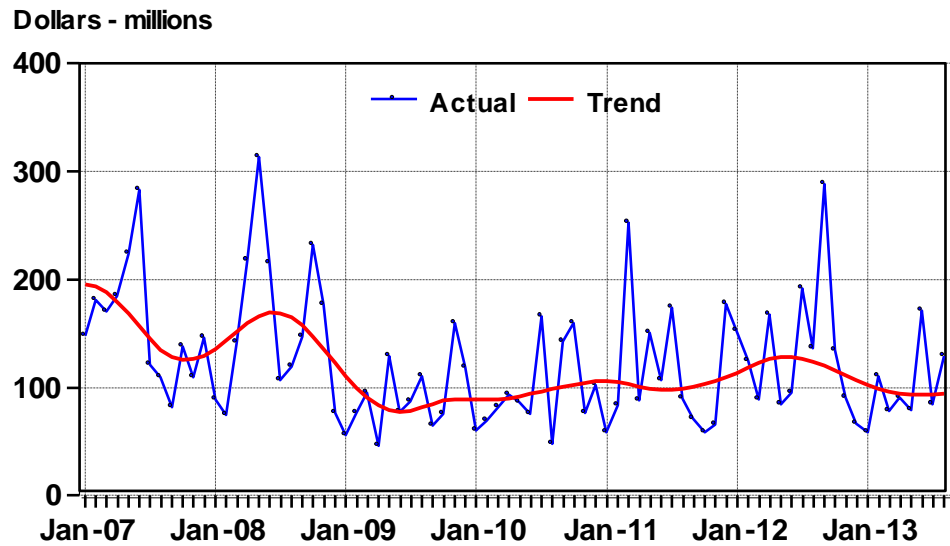
Source: Statistics Canada.

Non-residential Building Permits Issued, Lower Mainland-Southwest Region January 2007 - August 2013



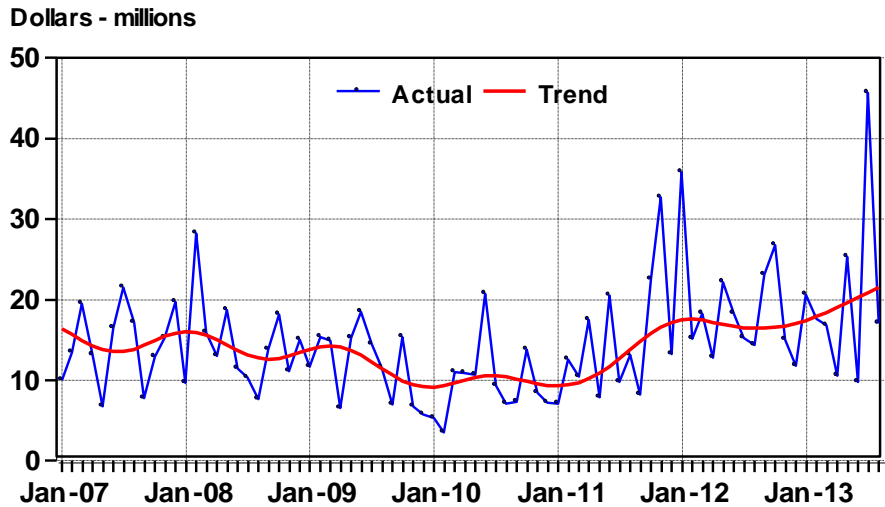
Source: Statistics Canada.

Commercial Building Permits Issued, Lower Mainland-Southwest Region January 2007 - August 2013



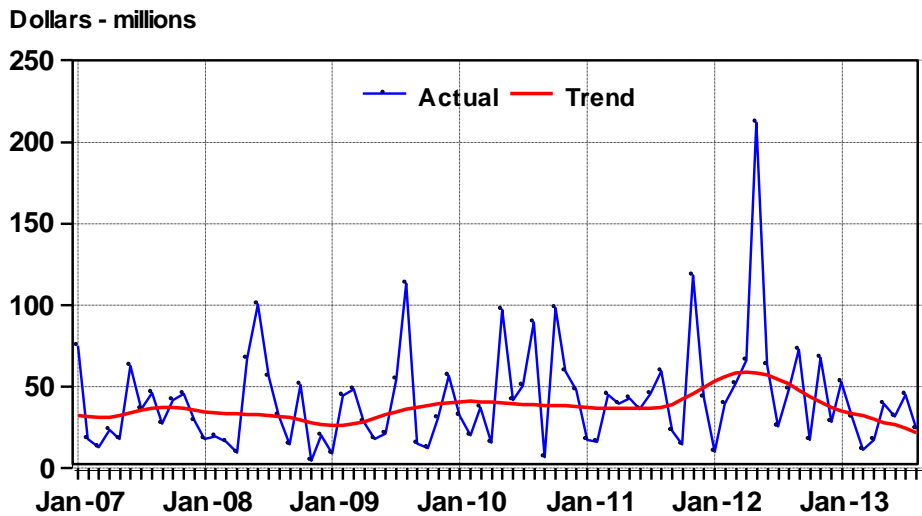
Source: Statistics Canada.

Industrial Building Permits Issued, Lower Mainland-Southwest Region January 2007 - August 2013



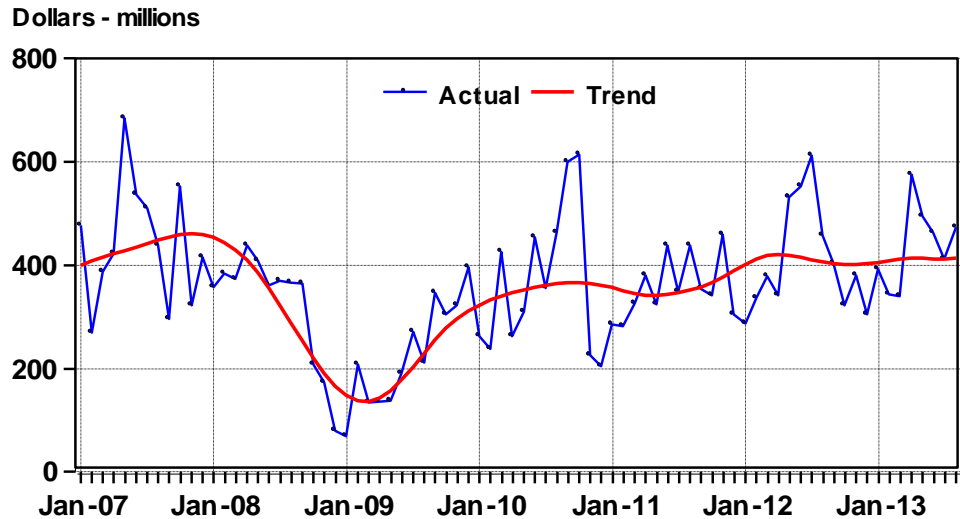
Source: Statistics Canada.

Institutional-Government Building Permits Issued, Lower Mainland-Southwest Region January 2007 - August 2013



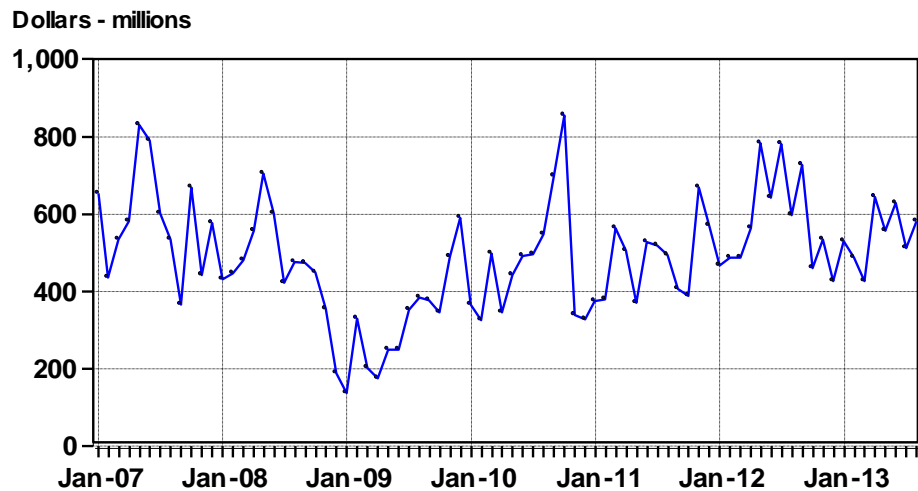
Source: Statistics Canada.

Residential Building Permits Issued, Lower Mainland-Southwest Region January 2007 - August 2013



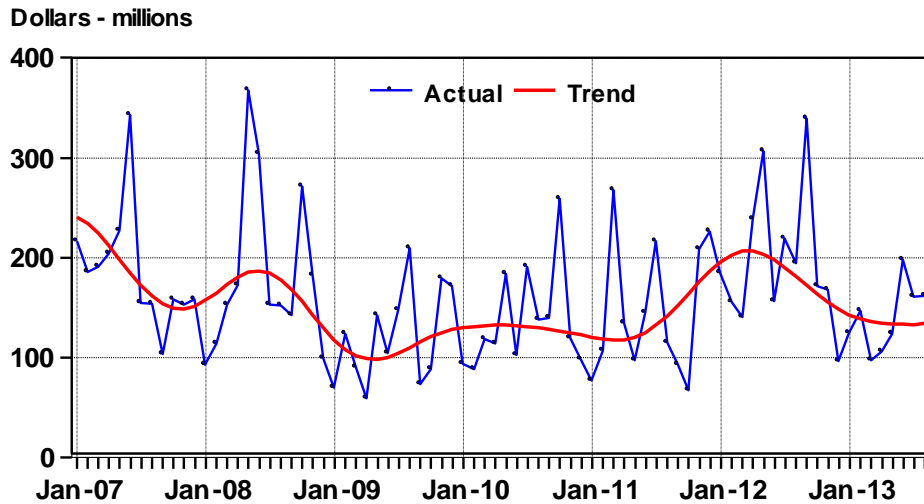
Source: Statistics Canada.

Total Building Permits Issued, Seasonally Adjusted, Metro Vancouver, January 2007 - August 2013



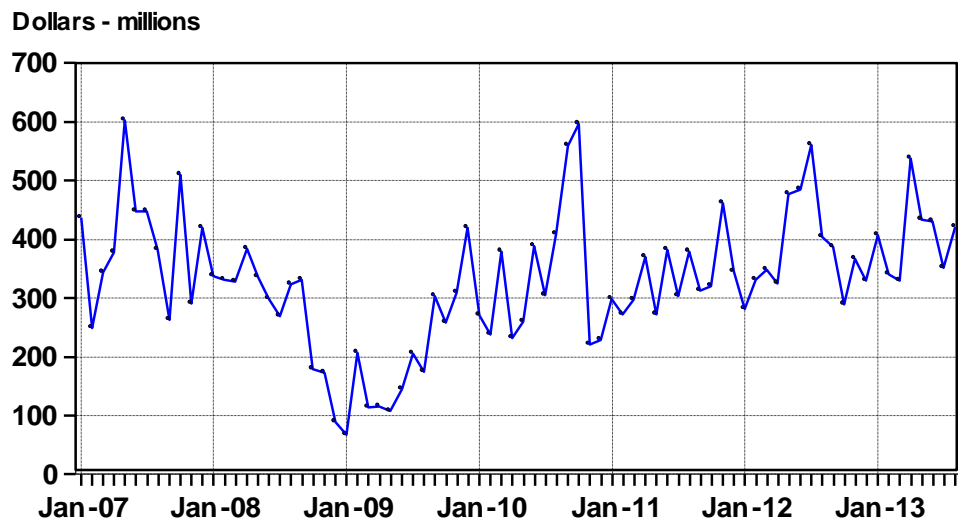
Source: Statistics Canada.

Non-residential Building Permits, Metro Vancouver January 2007 - August 2013



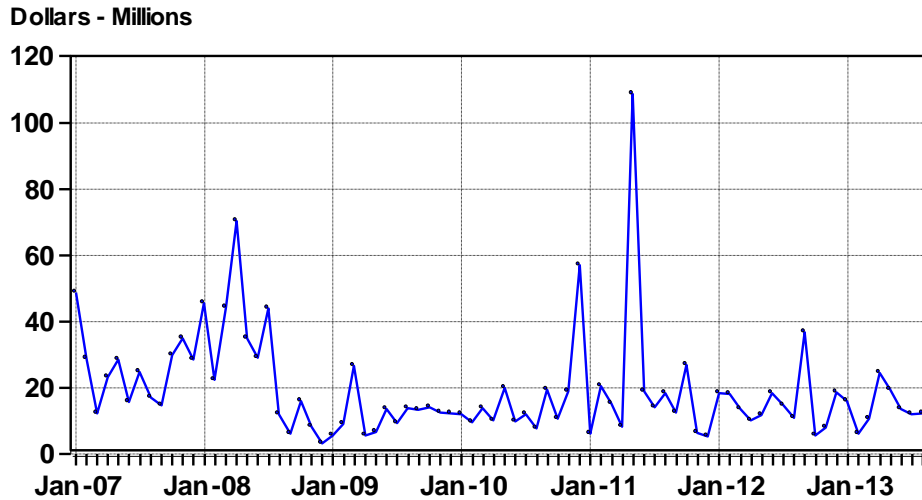
Source: Statistics Canada.

Residential Building Permits, Seasonally Adjusted, Metro Vancouver, January 2007 - August 2013



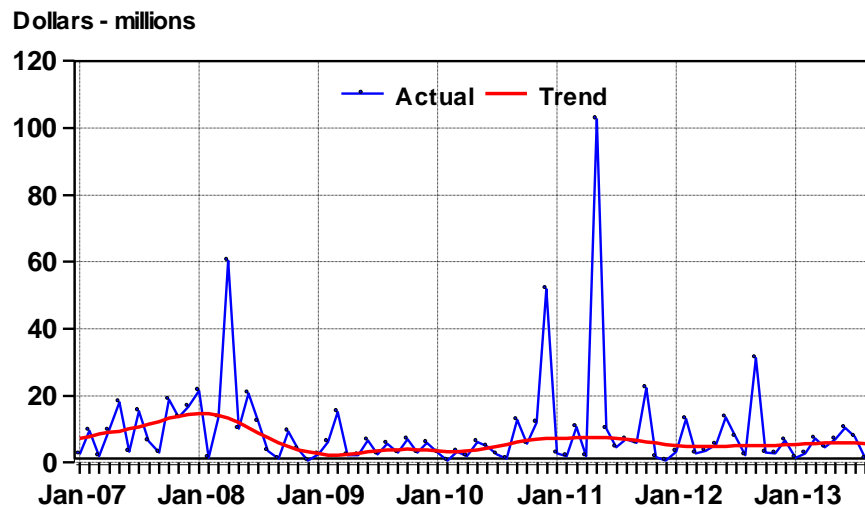
Source: Statistics Canada.

Total Building Permits Issued, Seasonally Adjusted, Abbotsford CMA January 2007 - August 2013



Source: Statistics Canada.

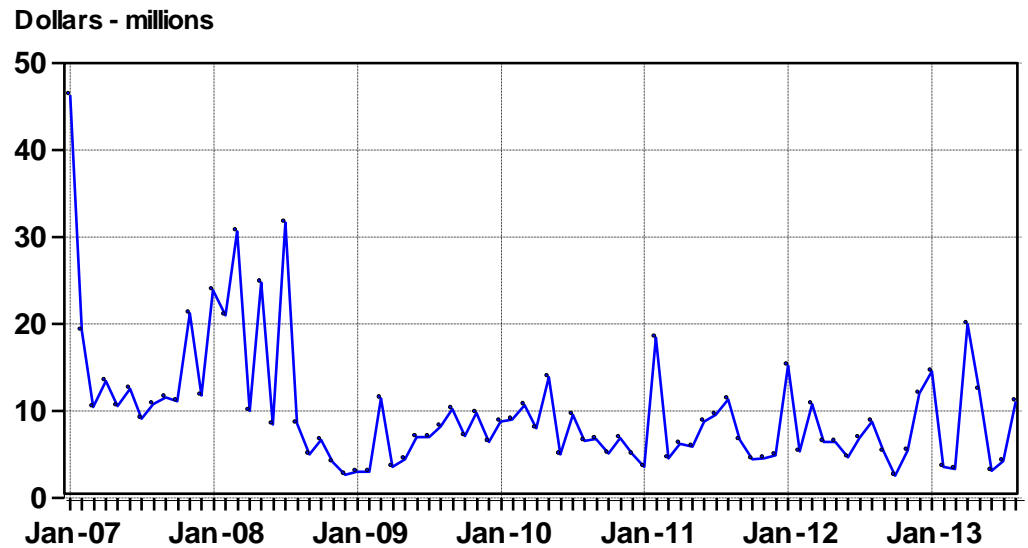
Non-residential Building Permits Issued, Abbotsford CMA January 2007 - August 2013



Source: Statistics Canada.

Residential Building Permits Issued, Seasonally Adjusted, Abbotsford CMA

January 2007 - August 2013



Source: Statistics Canada.