

## Lower Mainland-Southwest Region

---

### *Month over Month Numbers*

#### **Total Building Permits**

Permit values dropped 39% in December to \$454.8 million from \$740.2 million in November.

#### **Non-residential Permits**

Total non-residential permits fell 48% to \$102.0 million from \$194.4 million in November.

- Commercial permits dropped 52% to \$74.2 million from \$156.1 million previously.
- Industrial permits fell 46% to \$8.9 million from \$16.6 million.
- Institutional-government permits declined 13% to \$18.9 million from \$21.7 million.

#### **Residential Permits**

Permit values decreased 35% to \$352.8 million from \$545.8 million in November.

### *Year over year Numbers*

#### **Total Building Permits**

Total building permit values were 10% higher at \$454.8 million from \$412.2 million last December.

#### **Non-residential Permits**

Total non-residential permits were 5% lower to \$102.0 million from \$107.1 million last year.

- Commercial permits were 11% higher.
- Industrial permits were off 25%.
- Institutional-government permits were 33% lower.

#### **Residential Permits**

Permit values were 16% higher at \$352.8 million compared to \$305.1 million.

### *Year to date Numbers*

#### **Total Building Permits**

Total building permit values were 5% lower at \$7.075 billion in 2013 compared to \$7.468 billion in 2012.

#### **Non-residential Permits**

Total non-residential permits were 24% lower at \$1.940 billion compared to \$2.557 billion in 2012.

- Commercial permits were 18% lower to \$1.335 billion.
- Industrial permits were 4% lower to 219.5 million.
- Institutional-government permits were down 45% to 385.2 million.

#### **Residential Permits**

Permit values were 5% higher than last year at \$5.135 billion compared to \$4.910 billion.

## Vancouver CMA

---

### *Seasonally adjusted numbers* **Total Building Permits**

Building permit values declined 31% to \$480.4 million seasonally adjusted in December 2013 compared to \$670.0 million in November.

#### **Non-residential Permits**

Non-residential building permits fell 47% to \$91.6 million from \$173.9 million in November.

- Commercial permits dropped 57% to \$64.5 million.
- Industrial permits increased 32% to \$8.3 million from \$6.3 million.
- Institutional-government permits edged up 2% to \$18.7 million from \$18.3 million.

#### **Residential Permits**

Residential building permit values decreased 26% to \$388.8 million seasonally adjusted.

### *The Month-over Month numbers*

#### **Total Building Permits**

Total building permit values fell 37% to \$436.7 million in December from \$693.8 million in November.

**Non-residential Permits** – same as seasonally adjusted results.

#### **Residential Permits**

Permit values decreased 34% to \$345.1 million from \$519.9 million in November.

### *The Year-over-year Numbers*

#### **Total Building Permits**

Building permit values were 14% higher to \$436.7 million from \$382.1 million last December.

#### **Non-residential Permits**

Non-residential permits were 6% lower to \$91.6 million from \$97.1 million one year ago.

- Commercial permits were 5% higher than last year.
- Institutional-government permits were 30% lower.
- Industrial permits were down 1%.

#### **Residential Permits**

Permit values were 21% higher to \$345.1 million from \$285.0 million last year.

### *The Year-to-date*

#### **Total Building Permits**

Building permit values in 2013 were 5% lower to \$6.616 billion from \$6.964 billion in 2012.

#### **Non-residential Permits**

Non-residential permits were 25% lower at \$1.777 billion from \$2.375 billion in 2012.

- Commercial permits were 18% lower at \$1.272 billion.
- Industrial permits were 16% lower to \$160.9 million.

- Institutional-government permits were 45% lower to \$344.3 million.

**Residential Permits**

Permit values were 5% higher at \$4.839 billion from \$4.589 billion in 2012.

## Abbotsford

---

### *Seasonally adjusted Numbers*

**Total Building permits**

Building permits slipped 7% to \$13.0 million from \$14.0 million in November.

**Non-residential Permits**

Non-residential permits shot up 183% to \$9.0million from \$3.2 million in November.

- Commercial permits totaled \$8.9 million compared to \$0.5 million in November.
- Industrial permits rose to \$0.14 million from \$0.11 million.
- No institutional-government building permits were issued in December.

**Residential Permits**

Residential building permits fell 63% to \$4.0 million from \$10.8 million.

### *The Month-over-Month Numbers*

**Total Building Permits**

Total building permit values decreased 14% to \$11.9 million in December from \$13.8 million in November.

**Non-residential Permits** - same as seasonally adjusted results.

**Residential Permits**

Permit values dropped 74% to \$2.7 million from \$10.3 million.

### *The Year-over-Year Numbers*

**Total Building Permits**

Permit values were down 32% to \$11.9 million from \$17.6 million in December 2012.

**Non-Residential Permits**

Total non-residential permits were 33% higher at \$9.0 million from \$6.8 million last year.

- Commercial permits were 95% higher at \$8.9 million from \$4.6 million.
- Industrial permits were 93% lower at \$0.1 million.
- No institutional-government permits were issued.

**Residential Permits**

Residential permits were 74% lower at \$2.7 million from \$10.4 million.

### *The Year-to-Date Numbers*

**Total Building Permits**

Permit values were 13% lower to \$162.8 million in 2013 compared to \$186.4 million in 2012.

**Non-Residential Permits**

Total non-residential permits were 32% lower to \$64.7 million.

- Commercial permits were 8% higher at \$27.3 million.
- Industrial permits were 18% lower at \$12.6 million.
- Institutional-government permits were 55% lower at \$24.9 million compared to \$55.2 million in 2012.

**Residential Permits**

Residential permits were up 8% to \$85.9 million.

Building Permits Issued – Lower Mainland-Southwest Region							
	Total	Non-Residential Permits			Residential Permits		
Period	Permits	Total	Industrial	Commercial	Inst.-Govt.	Value	Units
(Dollars – Thousands)							
Nov-13	740,245	194,414	16,566	156,122	21,726	545,831	2,376
Dec-13	454,808	102,030	8,900	74,228	18,902	352,778	1,549
% change	-39	-48	-46	-52	-13	-35	-35
Dec-12	412,191	107,101	11,841	66,844	28,416	305,090	1,390
Dec-13	454,808	102,030	8,900	74,228	18,902	352,778	1,549
% change	10	-5	-25	11	-33	16	11
Jan-Dec-12	7,467,868	2,557,338	229,045	1,623,891	704,402	4,910,530	20,043
Jan-Dec-13	7,075,452	1,939,985	219,485	1,335,323	385,177	5,135,467	21,236
% change	-5	-24	-4	-18	-45	5	6

Source: Statistics Canada

Seasonally Adjusted Building Permits Issued - Vancouver CMA									
	Total	Non-Residential Permits			Residential Permits				
Period	Permits	Total	Industrial	Commercial	Inst.-Govt.	Value	Total		
(Dollars - Thousands)							Units	Singles	Multiples
Jul-13	513,000	161,277	39,224	81,561	40,492	351,723	1,479	251	1,228
Aug-13	580,833	162,145	12,135	127,250	22,760	418,688	1,763	213	1,550
Sep-13	517,785	177,121	5,186	95,667	76,268	340,664	1,123	216	907
Oct-13	549,553	212,167	7,720	191,692	12,755	337,386	1,233	244	989
Nov-13	699,977	173,897	6,324	149,264	18,309	526,080	2,259	245	2,014
Dec-13	480,425	91,591	8,337	64,512	18,742	388,834	1,601	280	1,321
% Change Dec 13- Nov 13	-31	-47	32	-57	2	-26	-29	14	-34

Building Permits Issued – Metro Vancouver							
	Total	Non-Residential Permits			Residential Permits		
Period	Permits	Total	Industrial	Commercial	Inst.-Govt.	Value	Units
(Dollars – Thousands)							
Nov-13	693,770	173,897	6,324	149,264	18,309	519,873	2,230
Dec-13	436,709	91,591	8,337	64,512	18,742	345,118	1,512
% change	-37	-47	32	-57	2	-34	-32
Dec-12	382,131	97,111	8,447	61,730	26,934	285,020	1,276
Dec-13	436,709	91,591	8,337	64,512	18,742	345,118	1,512
% change	14	-6	-1	5	-30	21	18
Jan-Dec-12	6,964,201	2,374,941	190,824	1,554,497	629,620	4,589,260	18,645
Jan-Dec-13	6,616,114	1,776,754	160,892	1,271,524	344,338	4,839,360	19,938
% change	-5	-25	-16	-18	-45	5	7

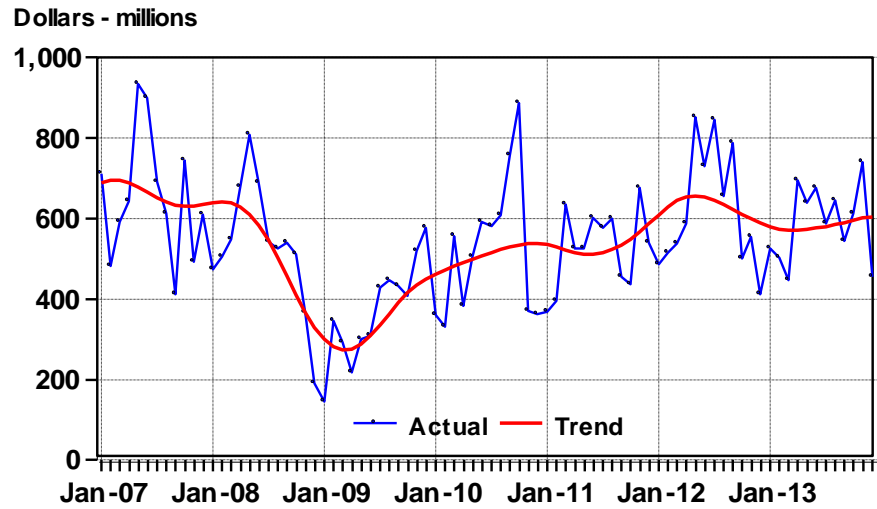
Source: Statistics Canada

Seasonally Adjusted Building Permits Issued - Abbotsford CMA									
	Total	Non-Residential Permits				Residential Permits			
Period	Permits	Total	Industrial	Commercial	Inst.-Govt.	Value	Total		
(Dollars – Thousands)							Units	Singles	Multiples
Jul-13	12,032	7,805	3,127	379	4,299	4,227	21	13	8
Aug-13	12,225	1,071	350	721	0	11,154	67	17	50
Sep-13	14,199	8,384	1,315	7,069	0	5,815	26	20	6
Oct-13	6,370	1,706	830	801	75	4,664	21	19	2
Nov-13	13,987	3,189	109	559	2,521	10,798	110	16	94
Dec-13	12,992	9,026	139	8,887	0	3,966	26	22	4
% Change Dec 13- Nov 13	-7	183	28	1490	-100	-63	-76	38	-96

Building Permits Issued – Abbotsford CMA							
	Total	Non-Residential Permits			Residential Permits		
Period	Permits	Total	Industrial	Commercial	Inst.-Govt.	Value	Units
(Dollars – Thousands)							
Nov-13	13,848	3,189	109	559	2,521	10,255	108
Dec-13	11,882	9,026	139	8,887	0	2,677	19
% change	-14	183	28	1490	-100	-74	-82
Dec-12	17,556	6,768	2,049	4,558	161	10,449	82
Dec-13	11,882	9,026	139	8,887	0	2,677	19
% change	-32	33	-93	95	-100	-74	-77
Jan-Dec-12	186,377	95,779	15,348	25,204	55,227	79,683	482
Jan-Dec-13	162,834	64,741	12,556	27,261	24,924	85,908	645
% change	-13	-32	-18	8	-55	8	34

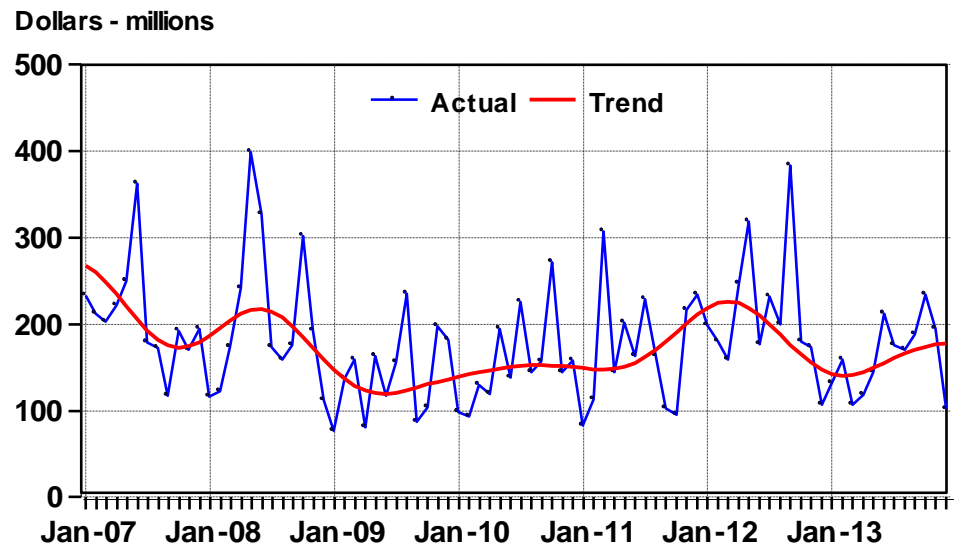
Source: Statistics Canada

Total Building Permits Issued,  
Lower Mainland-Southwest Region  
January 2007 - December 2013



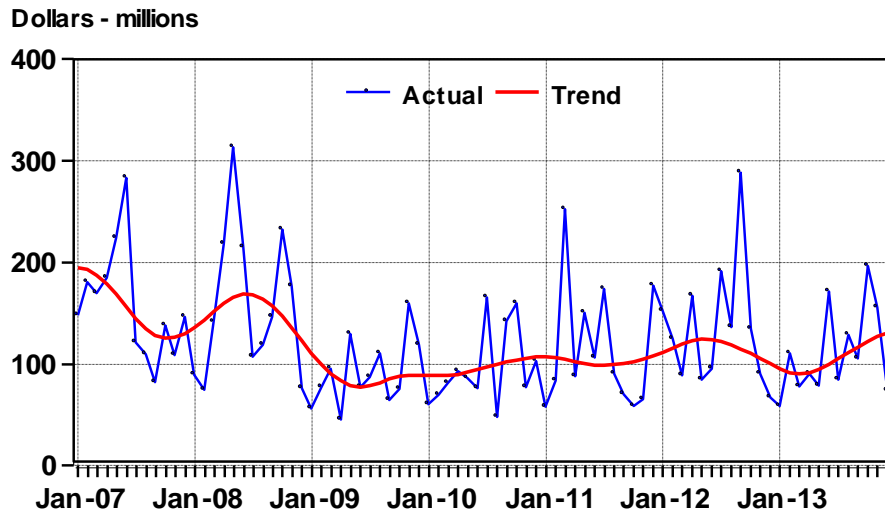
Source: Statistics Canada.

## Non-residential Building Permits Issued, Lower Mainland-Southwest Region January 2007 - December 2013



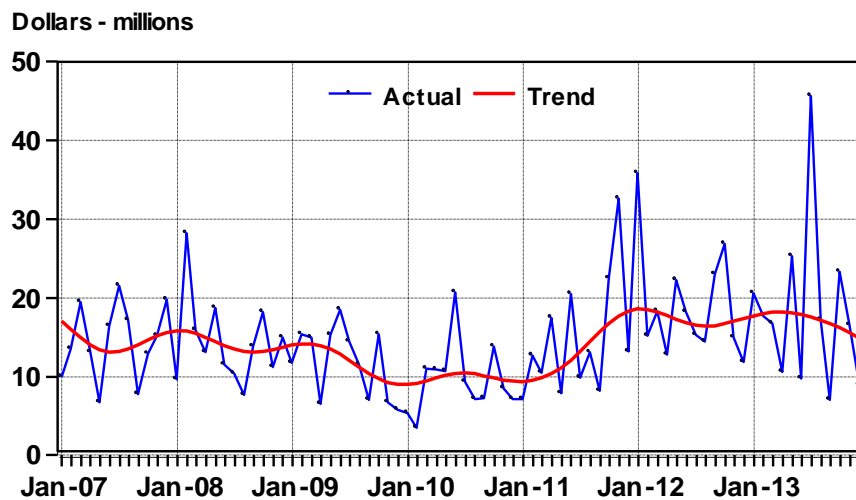
Source: Statistics Canada.

### Commercial Building Permits Issued, Lower Mainland-Southwest Region January 2007 - December 2013



Source: Statistics Canada.

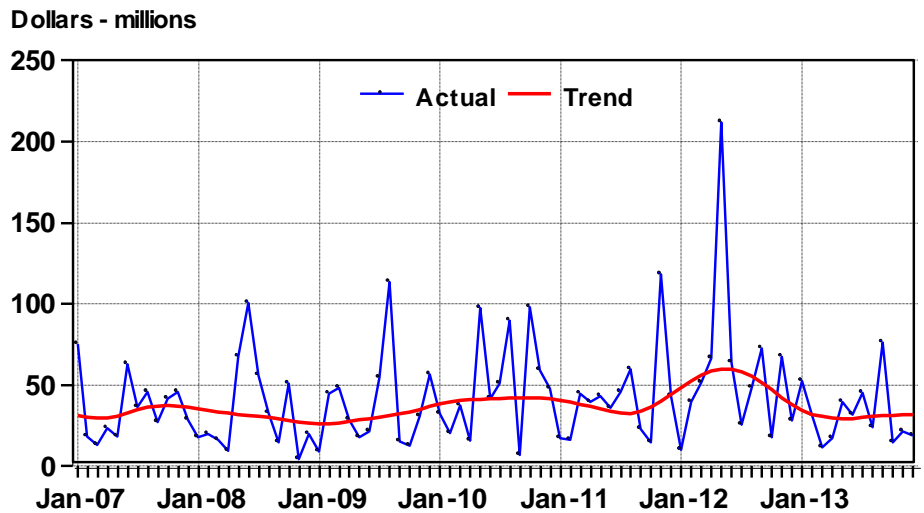
### Industrial Building Permits Issued, Lower Mainland-Southwest Region January 2007 - December 2013



Source: Statistics Canada.

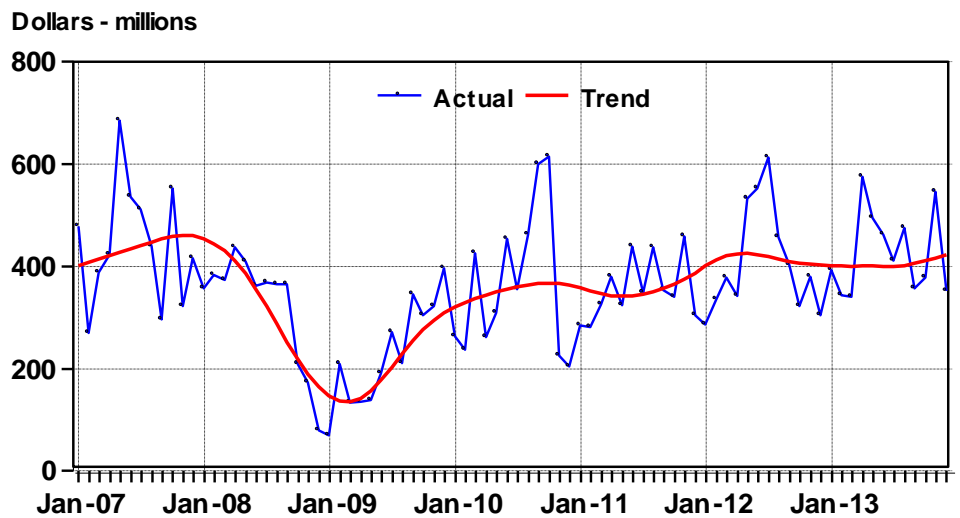


### Institutional-Government Building Permits Issued, Lower Mainland-Southwest Region January 2007 - December 2013



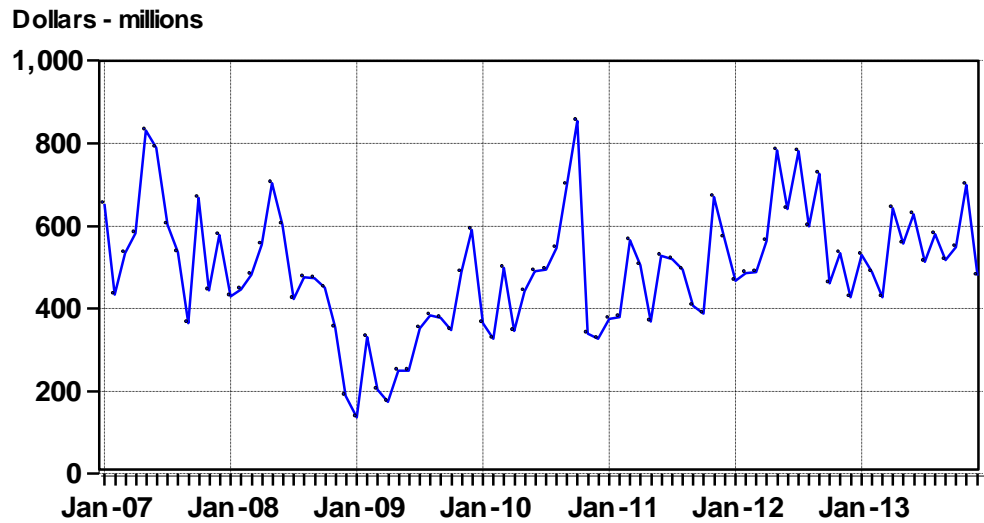
Source: Statistics Canada.

### Residential Building Permits Issued, Lower Mainland-Southwest Region January 2007 - December 2013



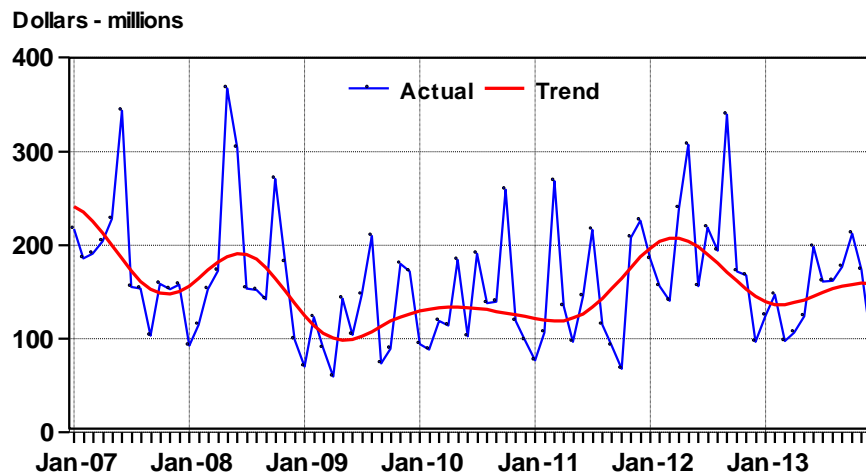
Source: Statistics Canada.

### Total Building Permits Issued, Seasonally Adjusted, Metro Vancouver, January 2007 - December 2013



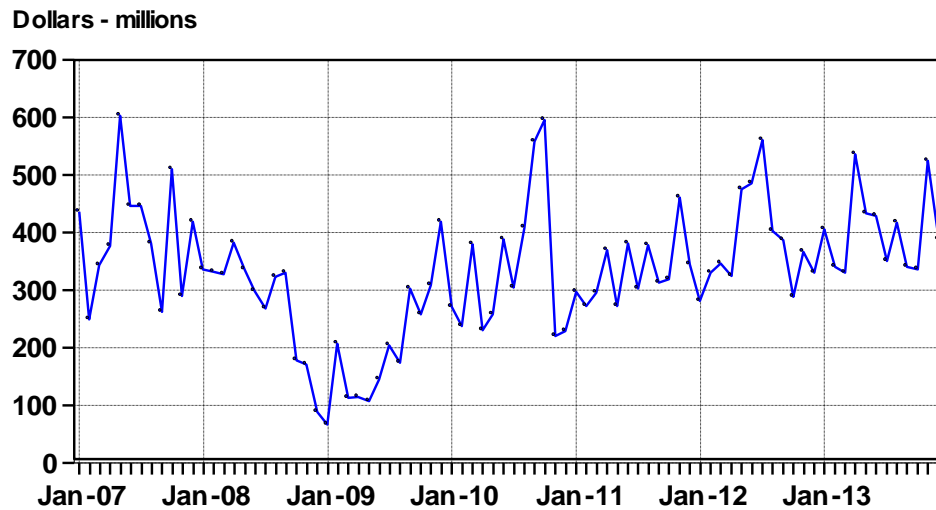
Source: Statistics Canada.

### Non-residential Building Permits, Metro Vancouver January 2007 - December 2013



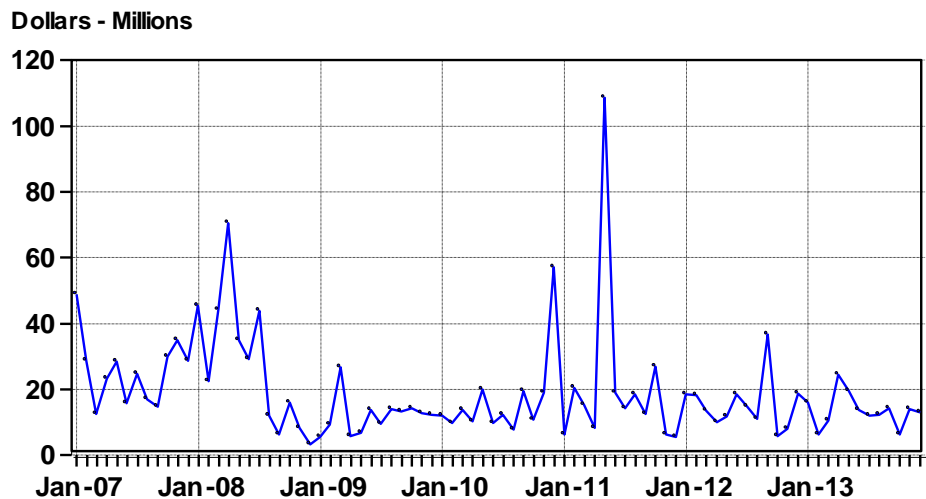
Source: Statistics Canada.

### Residential Building Permits, Seasonally Adjusted, Metro Vancouver, January 2007 - December 2013



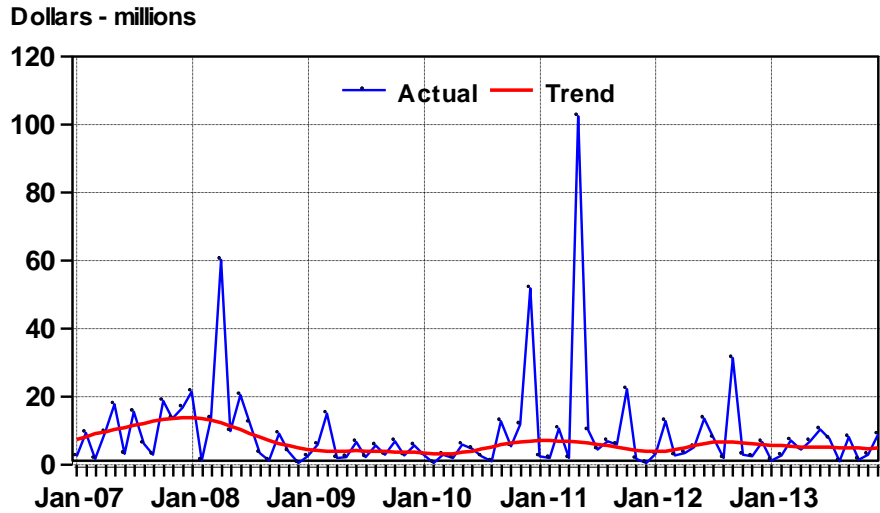
Source: Statistics Canada.

### Total Building Permits Issued, Seasonally Adjusted, Abbotsford CMA January 2007 - December 2013



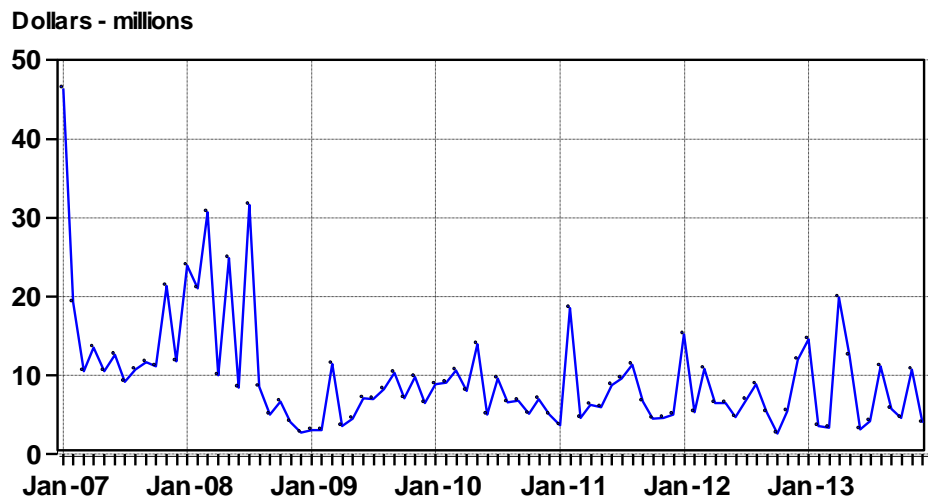
Source: Statistics Canada.

### Non-residential Building Permits Issued, Abbotsford CMA January 2007 - December 2013



Source: Statistics Canada.

### Residential Building Permits Issued, Seasonally Adjusted, Abbotsford CMA January 2007 - December 2013



Source: Statistics Canada.