

## Lower Mainland-Southwest Region

---

### *Month over Month Numbers*

#### **Total Building Permits**

Permit values rose 21% in November to \$743.1 million from \$613.06 million in October 2013.

#### **Non-residential Permits**

Total non-residential permits fell 15% to \$199.7 million from \$234.7 million in October.

- Commercial permits declined 18% to \$161.4 million from \$196.6 million previously.
- Industrial permits fell 29% to \$16.6 million from \$23.3 million in October.
- Institutional-government permits bounced up 48% to \$21.7 million from \$14.7 million.

#### **Residential Permits**

Permit values surged 44% higher to \$543.4 million from \$378.3 million in October.

### *Year over year Numbers*

#### **Total Building Permits**

Total building permit values were 34% higher to \$743.1 million from \$553.8 million last November.

#### **Non-residential Permits**

Total non-residential permits were 15% higher at \$199.7 million compared to \$173.3 million last year.

- Commercial permits were 78% higher.
- Industrial permits were 10% higher.
- Institutional-government permits were 68% lower.

#### **Residential Permits**

Permit values were 43% higher than last year at \$543.4 million compared to \$380.5 million.

### *Year to date Numbers*

#### **Total Building Permits**

Total building permit values were 6% lower at \$6.624 billion from \$7.056 billion in the first eleven months of this year compared to the same period last year.

#### **Non-residential Permits**

Total non-residential permits were 25% lower at \$1.843 billion compared to \$2.450 billion last year.

- Commercial permits were 19% lower.
- Industrial permits were 3% lower.
- Institutional-government permits were down 46%.

#### **Residential Permits**

Permit values were 4% higher than last year at \$4.780 billion compared to \$4.605 billion.

## Vancouver CMA

---

### *Seasonally adjusted numbers* **Total Building Permits**

Building permit values climbed 26% to \$691.1 million seasonally adjusted in November 2013 compared to \$549.6 million in October.

#### **Non-residential Permits**

Non-residential building permits declined 18% to \$173.9 million from \$212.2 million in October.

- Commercial permits declined 22% to \$149.3 million.
- Industrial permits decreased 18% to \$6.3 million from \$7.7 million.
- Institutional-government permits jumped 44% to \$18.3 million from \$12.7 million.

#### **Residential Permits**

Residential building permit values surged 53% to \$517.2 million seasonally adjusted.

### *The Month-over Month numbers*

#### **Total Building Permits**

Total building permit values increased 22% to \$687.0 million in November from \$564.3 million in October.

**Non-residential Permits** – same as seasonally adjusted results.

#### **Residential Permits**

Permit values increased 46% to \$513.1 million from \$352.1 million in October.

### *The Year-over-year Numbers*

#### **Total Building Permits**

Building permit values were 29% higher to \$687.0 million from \$530.8 million last November.

#### **Non-residential Permits**

Non-residential permits were 4% higher to \$173.9 million from \$167.9 million one year ago.

- Commercial permits were 66% higher than last year.
- Industrial permits were 48% lower.
- Institutional-government permits were 72% lower.

#### **Residential Permits**

Permit values were 41% higher to \$513.1 million from \$362.9 million last year.

### *The Year-to-date*

#### **Total Building Permits**

Building permit values were 6% lower at \$6.173 billion from \$6.582 billion last January to November.

#### **Non-residential Permits**

Non-residential permits were 26% lower at \$1.685 billion from \$2.278 billion one year ago.

- Commercial permits were 19% lower at \$1.207 billion from \$1.493 billion last year.

- Industrial permits were 16% lower at \$152.6 million.
- Institutional-government permits were 46% lower than last year.

**Residential Permits**

Permit values were 4% higher at \$4.487 billion from \$4.304 billion last year.

## Abbotsford

---

### *Seasonally adjusted Numbers*

**Total Building permits**

Building permits jumped 119% to \$13.9 million from \$6.4 million in October.

**Non-residential Permits**

Non-residential permits rose 87% to \$3.2 million from \$1.7 million in October.

- Institutional-government building permits increased to \$2.5 million from \$0.1 million.
- Commercial permits slipped 30% to \$0.6 million from \$0.8 million.
- Industrial permits fell 87% to \$0.1 million from \$0.8 million.

**Residential Permits**

Residential building permits jumped 130% to \$10.8 million from \$4.7 million.

### *The Month-over-Month Numbers*

**Total Building Permits**

Total building permit values increased 103% to \$13.8 million in November from \$6.8 million in October.

**Non-residential Permits** - same as seasonally adjusted results.

**Residential Permits**

Permit values jumped 135% to \$10.3 million.

### *The Year-over-Year Numbers*

**Total Building Permits**

Permit values were up 71% to \$13.8 million from \$8.1 million in November 2012.

**Non-Residential Permits**

Total non-residential permits were 19% higher at \$3.2 million compared to \$2.7 million last year.

- Commercial permits were \$0.6 million compared to nearly zero one year earlier.
- Industrial permits were 94% lower at \$0.1 million.
- Institutional-government permits were 211% higher at \$2.5 million compared to \$0.8 million last year.

**Residential Permits**

Residential permits were 151% higher at \$10.3 million from 4.1 million.

### *The Year-to-Date Numbers*

**Total Building Permits**

Permit values were 11% lower to \$151.0 million in January-November 2013 compared to \$168.8 million in the same period last year.

**Non-Residential Permits**

Total non-residential permits were 37% lower at \$55.7 million.

- Commercial permits were 11% lower at \$18.4 million.
- Industrial permits were 7% lower at \$12.4 million.
- Institutional-government permits were 55% lower at \$24.9 million compared to \$55.1 million last year.

**Residential Permits**

Residential permits were 20% higher at \$83.2 million compared to \$69.2 million last year.

Building Permits Issued – Lower Mainland-Southwest Region							
	Total	Non-Residential Permits			Residential Permits		
Period	Permits	Total	Industrial	Commercial	Inst.-Govt.	Value	Units
(Dollars – Thousands)							
Oct-13	612,960	234,672	23,322	196,625	14,725	378,288	1,375
Nov-13	743,102	199,739	16,566	161,447	21,726	543,363	2,391
% change	21	-15	-29	-18	48	44	74
Nov-12	553,761	173,292	15,000	90,571	67,721	380,469	1,414
Nov-13	743,102	199,739	16,566	161,447	21,726	543,363	2,391
% change	34	15	10	78	-68	43	69
Jan-Nov-12	7,055,677	2,450,237	217,204	1,557,047	675,986	4,605,440	18,653
Jan-Nov-13	6,623,501	1,843,280	210,585	1,266,420	366,275	4,780,221	19,702
% change	-6	-25	-3	-19	-46	4	6

Source: Statistics Canada

Seasonally Adjusted Building Permits Issued - Vancouver CMA										
	Total	Non-Residential Permits			Residential Permits					
Period	Permits	Total	Industrial	Commercial	Inst.-Govt.	Value	Total	Units	Singles	Multiples
(Dollars - Thousands)										
Jun-13	628,624	198,545	6,986	167,231	24,328	430,079	2,127	226	1,901	
Jul-13	513,000	161,277	39,224	81,561	40,492	351,723	1,479	251	1,228	
Aug-13	580,833	162,145	12,135	127,250	22,760	418,688	1,763	213	1,550	
Sep-13	517,785	177,121	5,186	95,667	76,268	340,664	1,123	216	907	
Oct-13	549,553	212,167	7,720	191,692	12,755	337,386	1,233	244	989	
Nov-13	691,090	173,912	6,324	149,279	18,309	517,178	2,241	233	2,008	
% Change Nov 13- Oct 13	26	-18	-18	-22	44	53	82	-5	103	

Building Permits Issued – Metro Vancouver							
Period	Total	Non-Residential Permits			Residential Permits		Units
	Permits	Total	Industrial	Commercial	Inst.-Govt.	Value	
(Dollars – Thousands)							
Oct-13	564,312	212,167	7,720	191,692	12,755	352,145	1,256
Nov-13	686,999	173,912	6,324	149,279	18,309	513,087	2,225
% change	22	-18	-18	-22	44	46	77
Nov-12	530,778	167,919	12,243	89,706	65,970	362,859	1,344
Nov-13	686,999	173,912	6,324	149,279	18,309	513,087	2,225
% change	29	4	-48	66	-72	41	66
Jan-Nov-12	6,582,070	2,277,830	182,377	1,492,767	602,686	4,304,240	17,369
Jan-Nov-13	6,172,634	1,685,178	152,555	1,207,027	325,596	4,487,456	18,421
% change	-6	-26	-16	-19	-46	4	6

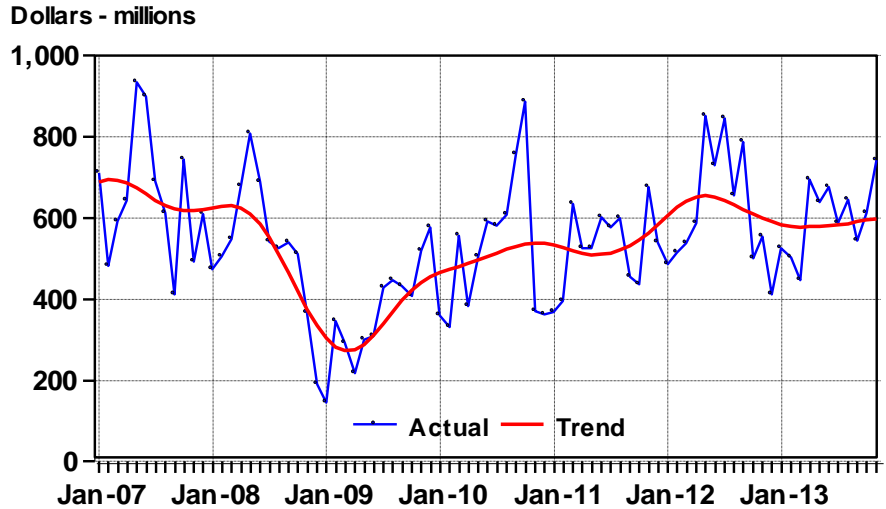
Source: Statistics Canada

Seasonally Adjusted Building Permits Issued - Abbotsford CMA									
Period	Total	Non-Residential Permits			Residential Permits				
	Permits	Total	Industrial	Commercial	Inst.-Govt.	Value	Total	Units	Singles
(Dollars – Thousands)									
Jun-13	13,758	10,538	1,024	2,159	7,355	3,220	18	6	12
Jul-13	12,032	7,805	3,127	379	4,299	4,227	21	13	8
Aug-13	12,225	1,071	350	721	0	11,154	67	17	50
Sep-13	14,199	8,384	1,315	7,069	0	5,815	26	20	6
Oct-13	6,370	1,706	830	801	75	4,664	21	19	2
Nov-13	13,939	3,189	109	559	2,521	10,750	109	15	94
% Change Nov 13- Oct 13	119	87	-87	-30	3261	130	419	-21	4600

Building Permits Issued – Abbotsford CMA							
Period	Total	Non-Residential Permits			Residential Permits		Units
	Permits	Total	Industrial	Commercial	Inst.-Govt.	Value	
(Dollars – Thousands)							
Oct-13	6,827	1,706	830	801	75	4,372	23
Nov-13	13,848	3,189	109	559	2,521	10,255	108
% change	103	87	-87	-30	3261	135	370
Nov-12	8,114	2,669	1,831	27	811	4,084	21
Nov-13	13,848	3,189	109	559	2,521	10,255	108
% change	71	19	-94	1970	211	151	414
Jan-Nov-12	168,821	89,011	13,299	20,646	55,066	69,234	400
Jan-Nov-13	150,952	55,715	12,417	18,374	24,924	83,231	626
% change	-11	-37	-7	-11	-55	20	57

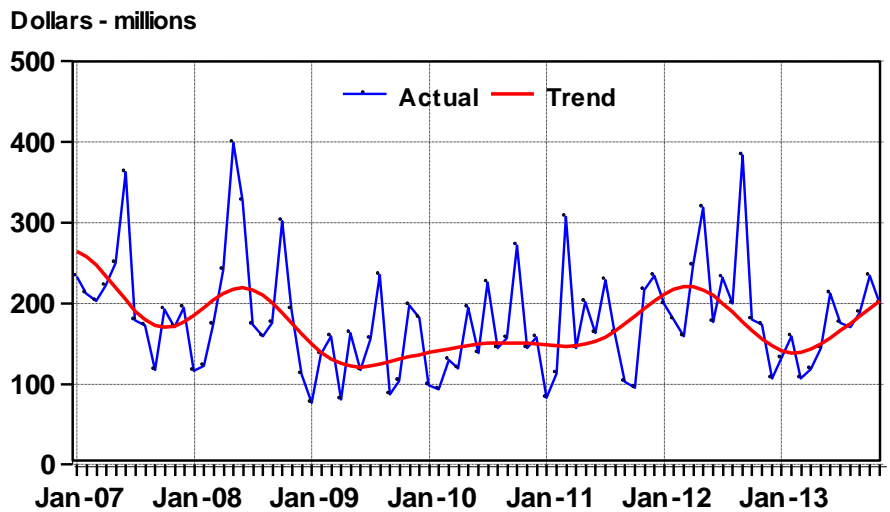
Source: Statistics Canada

### Total Building Permits Issued, Lower Mainland-Southwest Region January 2007 - November 2013



Source: Statistics Canada.

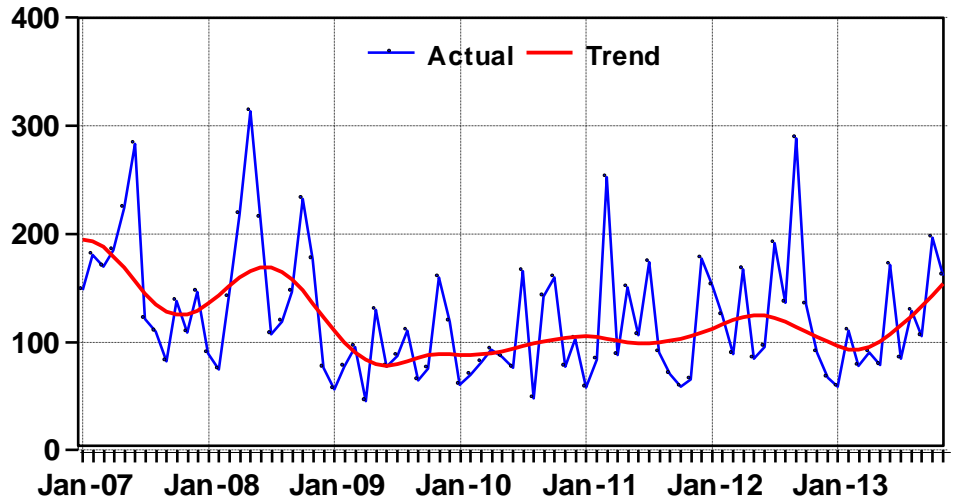
### Non-residential Building Permits Issued, Lower Mainland-Southwest Region January 2007 - November 2013



Source: Statistics Canada.

### Commercial Building Permits Issued, Lower Mainland-Southwest Region January 2007 - November 2013

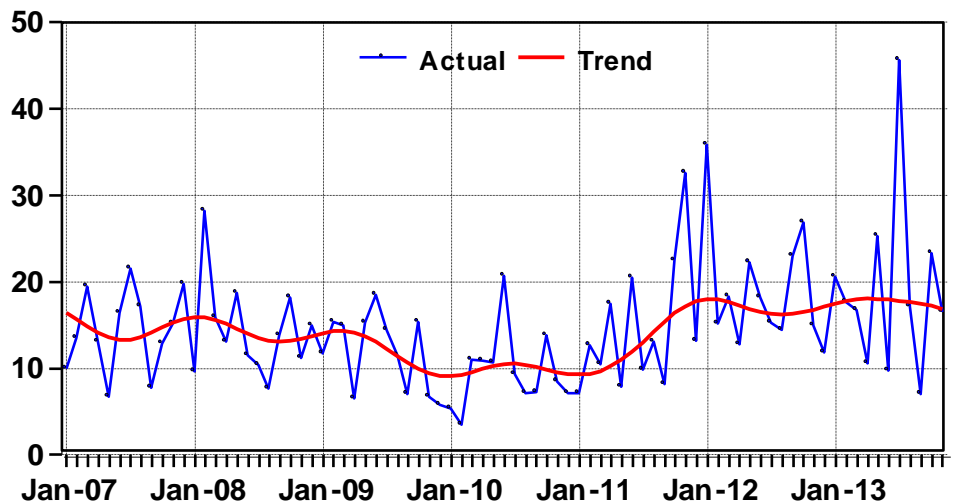
Dollars - millions



Source: Statistics Canada.

### Industrial Building Permits Issued, Lower Mainland-Southwest Region January 2007 - November 2013

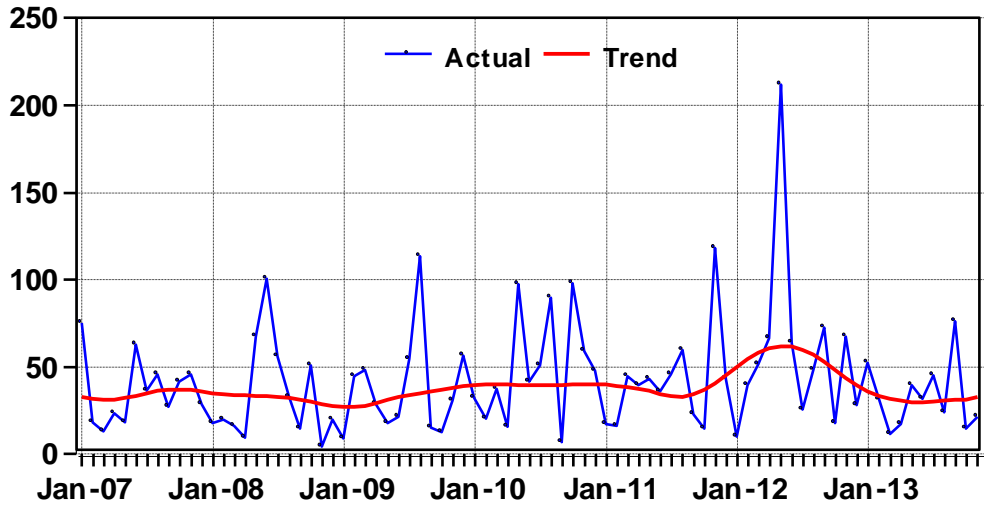
Dollars - millions



Source: Statistics Canada.

### Institutional-Government Building Permits Issued, Lower Mainland-Southwest Region January 2007 - November 2013

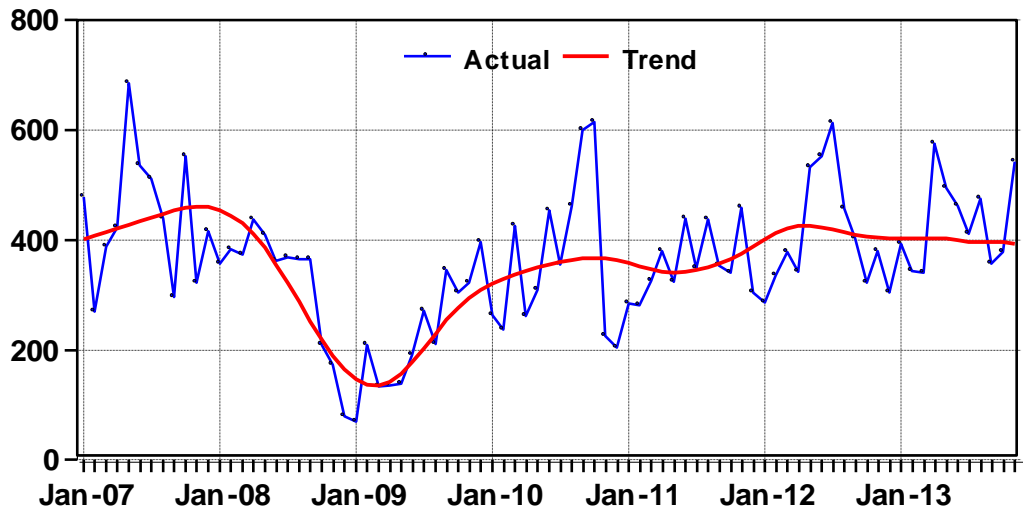
Dollars - millions



Source: Statistics Canada.

### Residential Building Permits Issued, Lower Mainland-Southwest Region January 2007 - November 2013

Dollars - millions

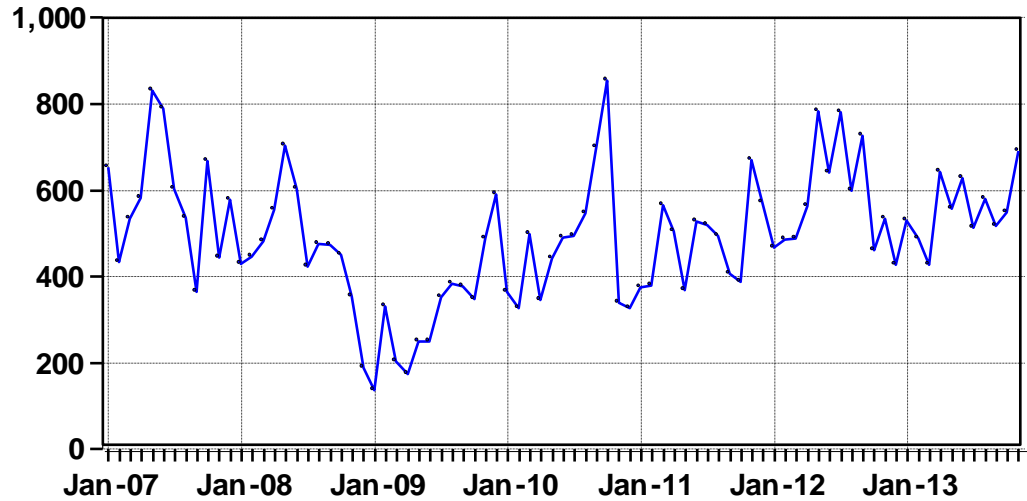


Source: Statistics Canada.



### Total Building Permits Issued, Seasonally Adjusted, Metro Vancouver, January 2007 - November 2013

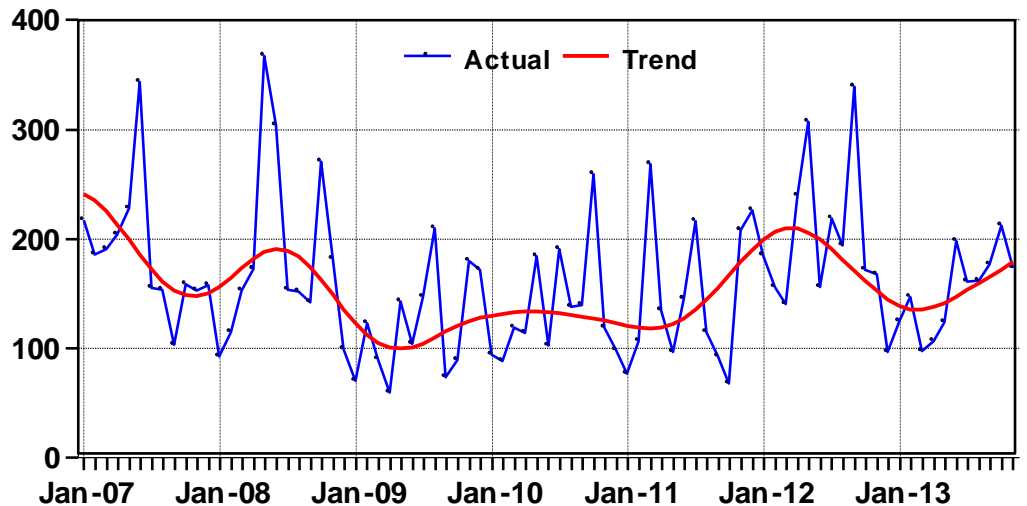
Dollars - millions



Source: Statistics Canada.

### Non-residential Building Permits, Metro Vancouver January 2007 - November 2013

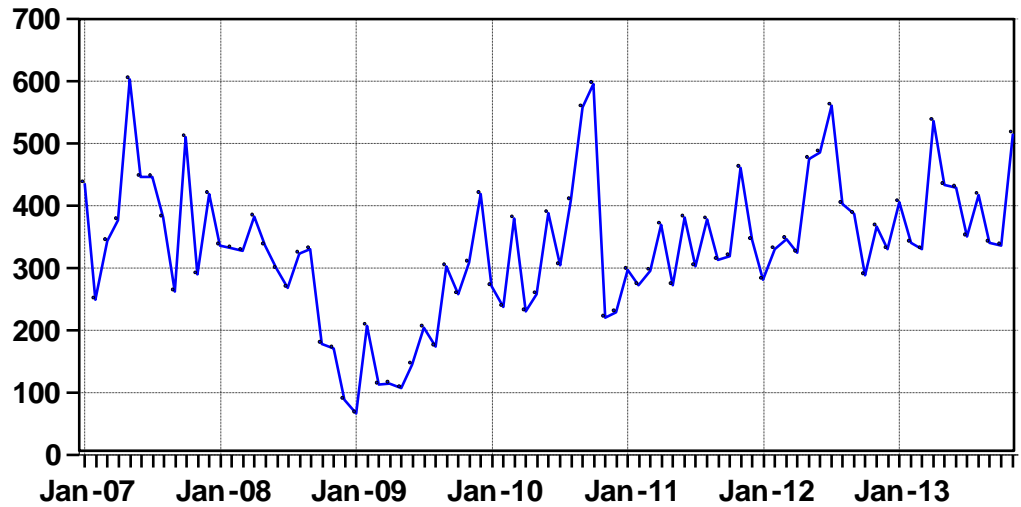
Dollars - millions



Source: Statistics Canada.

### Residential Building Permits, Seasonally Adjusted, Metro Vancouver, January 2007 - November 2013

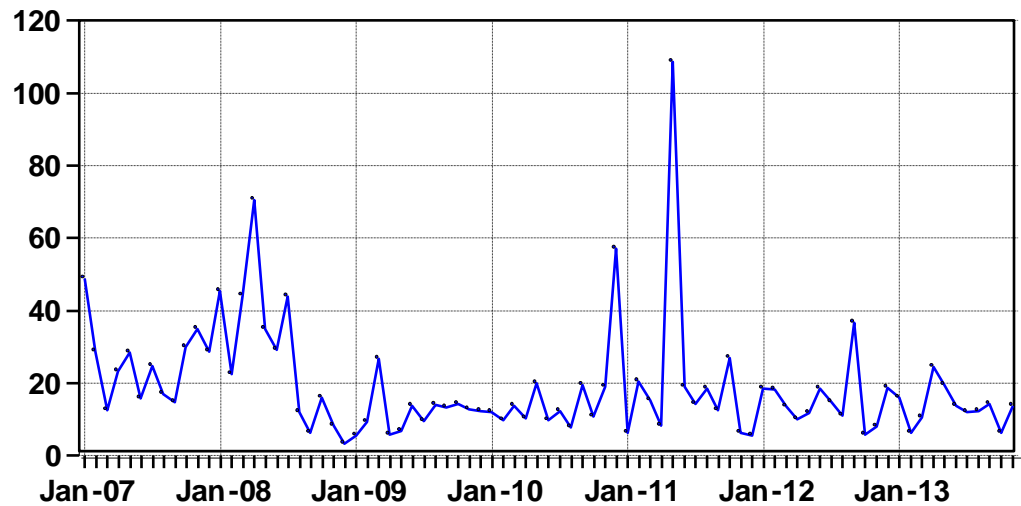
Dollars - millions



Source: Statistics Canada.

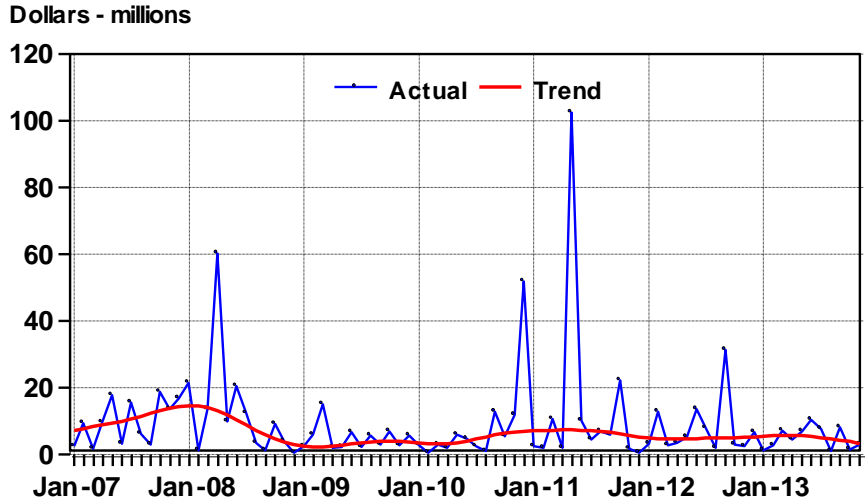
### Total Building Permits Issued, Seasonally Adjusted, Abbotsford CMA January 2007 - November 2013

Dollars - Millions



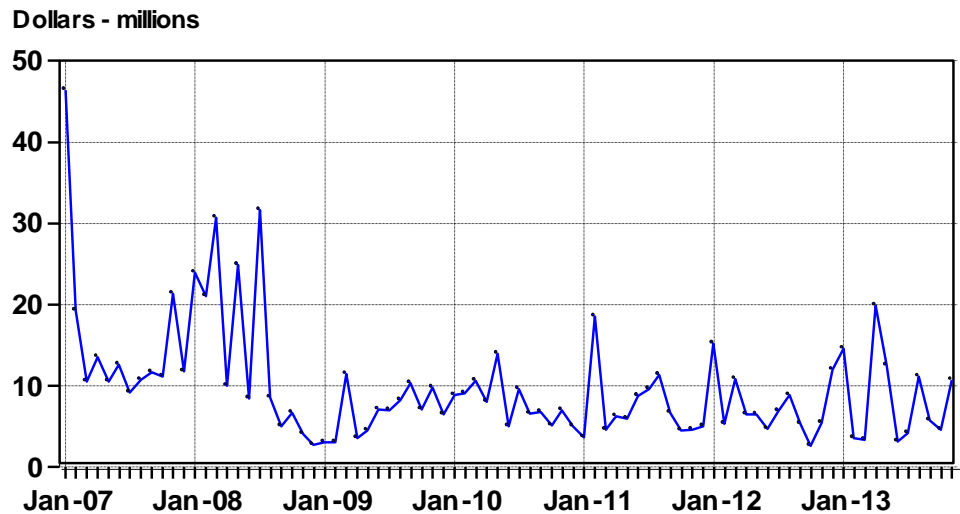
Source: Statistics Canada.

Non-residential Building Permits Issued,  
Abbotsford CMA  
January 2007 - November 2013



Source: Statistics Canada.

Residential Building Permits Issued,  
Seasonally Adjusted, Abbotsford CMA  
January 2007 - November 2013



Source: Statistics Canada.