

Lower Mainland-Southwest Region

Month over Month Numbers

Total Building Permits

Permits rose 12% in October to \$613.0 million from \$545.4 million in September 2013.

Non-residential Permits

Total non-residential permits climbed 24% to \$234.7 million from \$188.9 million in September.

- Commercial permits jumped 86% to \$196.6 million from \$105.5 million previously.
- Industrial permits shot up 230% to \$23.3 million from \$7.1 million in September.
- Institutional-government permits fell 81% to \$14.7 million.

Residential Permits

Permit values edged up 6% to \$378.3 million from \$356.5 million in September.

Year over year Numbers

Total Building Permits

Total building permit values were 22% higher to \$613.0 million from \$501.6 million last October.

Non-residential Permits

Total non-residential permits were 31% higher to \$234.7 million from \$179.6 million last year.

- Commercial permits were 46% higher.
- Industrial permits were 13% lower.
- Institutional-government permits were down 16%.

Residential Permits

Permit values were 17% higher than last year at \$378.3 million compared to \$322.0 million.

Year to date Numbers

Total Building Permits

Total building permit values were 10% lower at \$5.88 billion from \$6.502 billion in the first ten months of this year compared to the same period last year.

Non-residential Permits

Total non-residential permits were 28% lower at \$1.644 billion compared to \$2.277 billion last year.

- Commercial permits were 25% lower.
- Industrial permits were 4% lower.
- Institutional-government permits were 43% lower.

Residential Permits

Permit values were little changed at \$4.237 billion compared to \$4.225 billion.

Vancouver CMA

Seasonally adjusted numbers **Total Building Permits**

Building permit values rose 6% to \$549.3 million seasonally adjusted in October 2013 compared to \$517.8 million in September.

Non-residential Permits

Non-residential building permits climbed 20% to \$212.2 million from \$177.1 million in September.

- Commercial permits doubled to \$191.7 million.
- Institutional-government permits fell 83% to \$12.8 million from \$76.3 million.
- Industrial permits jumped 49% to \$7.7 million from \$5.2 million.

Residential Permits

Residential building permit values slipped 1% to \$337.1 million seasonally adjusted.

The Month-over Month numbers

Total Building Permits

Total building permit values increased 9% to \$564.3 million in October from \$515.5 million in September.

Non-residential Permits – same as seasonally adjusted results.

Residential Permits

Permit values increased 4% to \$352.1 million from \$338.3 million in September.

The Year-over-year Numbers

Total Building Permits

Building permit values were 19% higher to \$564.3 million from \$473.9 million last October.

Non-residential Permits

Non-residential permits were 23% higher to \$212.2 million from \$171.9 million one year ago.

- Commercial permits were 46% higher.
- Industrial permits were 67% lower.
- Institutional-government permits were 26% lower than last year.

Residential Permits

Permit values were 17% higher to \$352.1 million from \$302.0 million last year.

The Year-to-date

Total Building Permits

Building permit values were 9% lower to \$5.486 billion from \$6.051 billion last January to October.

Non-residential Permits

Non-residential permits were 28% lower to \$1.511 billion from \$2.110 billion one year ago.

- Commercial permits were 25% lower to \$1.058 billion.
- Industrial permits were 14% lower to \$146.2 million.
- Institutional-government permits were 43% lower at \$307.3 million.

Residential Permits

Permit values were 1% higher to \$3.974 billion from \$3.941 billion last year.

Abbotsford

Seasonally adjusted Numbers

Total Building permits

Building permits fell 55% to \$6.4 million from \$14.2 million in September.

Non-residential Permits

Non-residential permits plummeted 80% to \$1.7 million from \$8.4 million in September.

- Commercial permits fell 89% to \$0.8 million from \$7.1 million.
- Industrial permits declined 37% to \$0.8 million from \$1.3 million.
- Institutional-government building permits came in at \$0.8 million in October compared to no permits issued in September.

Residential Permits

Residential building permits fell 20% to \$4.7 million from \$5.8 million in September.

The Month-over-Month Numbers

Total Building Permits

Total building permit values dropped 52% to \$6.8 million in October from \$14.1 million in September.

Non-residential Permits - same as seasonally adjusted results.

Residential Permits

Permit values declined 16% to \$4.4 million.

The Year-over-Year Numbers

Total Building Permits

Permit values were up 14% to \$6.8 million from \$6.0 million in October 2012.

Non-Residential Permits

Total non-residential permits were 45% lower to \$1.7 million compared to \$3.1 million last year.

- Commercial permits were off 43% to \$0.8 million from \$1.4 million.
- Industrial permits were 37% lower to \$0.8 million from \$1.3 million.
- Institutional-government permits were 79% lower.

Residential Permits

Residential permits were 84% higher at \$11.5 million compared to \$6.2 million.

The Year-to-Date Numbers

Total Building Permits

Permit values were 15% lower to \$137.1 million in January-October 2013 compared to \$160.7 million in the same period last year.

Non-Residential Permits

Total non-residential permits were 39% lower to \$52.5 million.

- Commercial permits were 14% lower to \$17.8 million.

- Industrial permits were up 7% to \$12.3 million.
- Institutional-government permits were down 59% to \$22.4 million compared to \$54.3 million last year.

Residential Permits

Residential permits were 12% higher to \$73.0 million.

Building Permits Issued – Lower Mainland-Southwest Region							
Period	Total	Non-Residential Permits				Residential Permits	
	Permits	Total	Industrial	Commercial	Inst.-Govt.	Value	Units
(Dollars – Thousands)							
Sep-13	545,405	188,883	7,065	105,469	76,349	356,522	1,194
Oct-13	612,960	234,672	23,322	196,625	14,725	378,288	1,375
% change	12	24	230	86	-81	6	15
Oct-12	501,631	179,589	26,844	135,116	17,629	322,042	1,207
Oct-13	612,960	234,672	23,322	196,625	14,725	378,288	1,375
% change	22	31	-13	46	-16	17	14
Jan-Oct-12	6,501,916	2,276,945	202,204	1,466,476	608,265	4,224,971	17,239
Jan-Oct-13	5,880,399	1,643,541	194,019	1,104,973	344,549	4,236,858	17,311
% change	-10	-28	-4	-25	-43	0	0

Source: Statistics Canada

Seasonally Adjusted Building Permits Issued - Vancouver CMA									
Period	Total	Non-Residential Permits				Residential Permits			
	Permits	Total	Industrial	Commercial	Inst.-Govt.	Value	Total	Singles	Multiples
(Dollars - Thousands)							Units	Singles	Multiples
May-13	558,170	124,455	20,457	77,714	26,284	433,715	1,529	202	1,327
Jun-13	628,624	198,545	6,986	167,231	24,328	430,079	2,127	226	1,901
Jul-13	513,000	161,277	39,224	81,561	40,492	351,723	1,479	251	1,228
Aug-13	580,833	162,145	12,135	127,250	22,760	418,688	1,763	213	1,550
Sep-13	517,785	177,121	5,186	95,667	76,268	340,664	1,123	216	907
Oct-13	549,285	212,167	7,720	191,692	12,755	337,118	1,235	246	989
% Change Oct 13-Sep 13	6	20	49	100	-83	-1	10	14	9

Building Permits Issued – Metro Vancouver							
Period	Total Permits	Non-Residential Permits			Residential Permits		
		Total	Industrial	Commercial	Inst.-Govt.	Value	Units
(Dollars – Thousands)							
Sep-13	515,466	177,121	5,186	95,667	76,268	338,345	1,123
Oct-13	564,312	212,167	7,720	191,692	12,755	352,145	1,256
% change	9	20	49	100	-83	4	12
Oct-12	473,880	171,874	23,607	131,082	17,185	302,006	1,137
Oct-13	564,312	212,167	7,720	191,692	12,755	352,145	1,256
% change	19	23	-67	46	-26	17	10
Jan-Oct-12	6,051,292	2,109,911	170,134	1,403,061	536,716	3,941,381	16,025
Jan-Oct-13	5,485,635	1,511,266	146,231	1,057,748	307,287	3,974,369	16,196
% change	-9	-28	-14	-25	-43	1	1

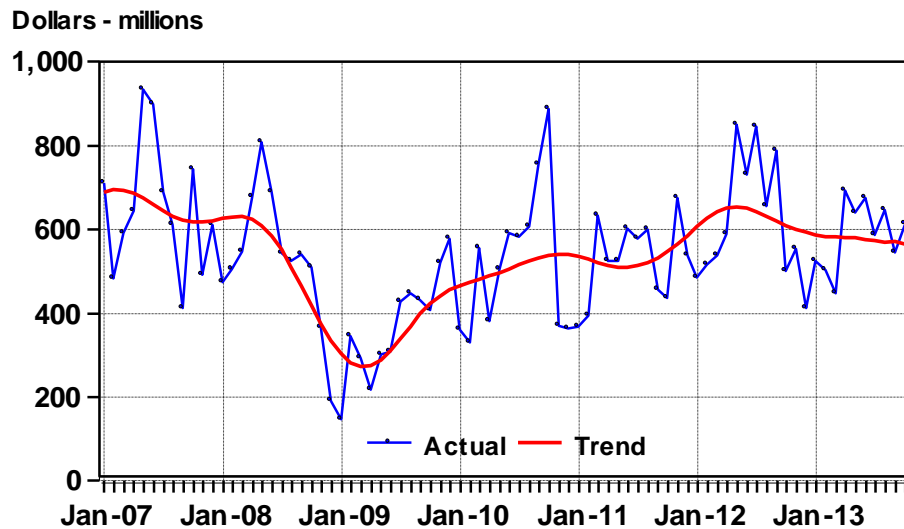
Source: Statistics Canada

Seasonally Adjusted Building Permits Issued - Abbotsford CMA									
Period	Total Permits	Non-Residential Permits			Residential Permits				
		Total	Industrial	Commercial	Inst.-Govt.	Value	Total	Singles	Multiples
(Dollars – Thousands)									
May-13	19,462	6,964	1,639	331	4,994	12,498	27	20	7
Jun-13	13,758	10,538	1,024	2,159	7,355	3,220	18	6	12
Jul-13	12,032	7,805	3,127	379	4,299	4,227	21	13	8
Aug-13	12,225	1,071	350	721	0	11,154	67	17	50
Sep-13	14,199	8,384	1,315	7,069	0	5,815	26	20	6
Oct-13	6,361	1,706	830	801	75	4,655	21	19	2
% Change Oct 13- Sep 13	-55	-80	-37	-89	#DIV/0!	-20	-19	-5	-67

Building Permits Issued – Abbotsford CMA							
Period	Total Permits	Non-Residential Permits				Residential Permits	
		Total	Industrial	Commercial	Inst.-Govt.	Value	Units
(Dollars – Thousands)							
Sep-13	14,102	8,384	1,315	7,069	0	5,220	26
Oct-13	6,827	1,706	830	801	75	4,372	23
% change	-52	-80	-37	-89	n.a	-16	-12
Oct-12	6,005	3,081	1,312	1,416	353	2,353	12
Oct-13	6,827	1,706	830	801	75	4,372	23
% change	14	-45	-37	-43	-79	86	92
Jan-Oct-12	160,707	86,342	11,468	20,619	54,255	65,150	379
Jan-Oct-13	137,104	52,526	12,308	17,815	22,403	72,976	518
% change	-15	-39	7	-14	-59	12	37

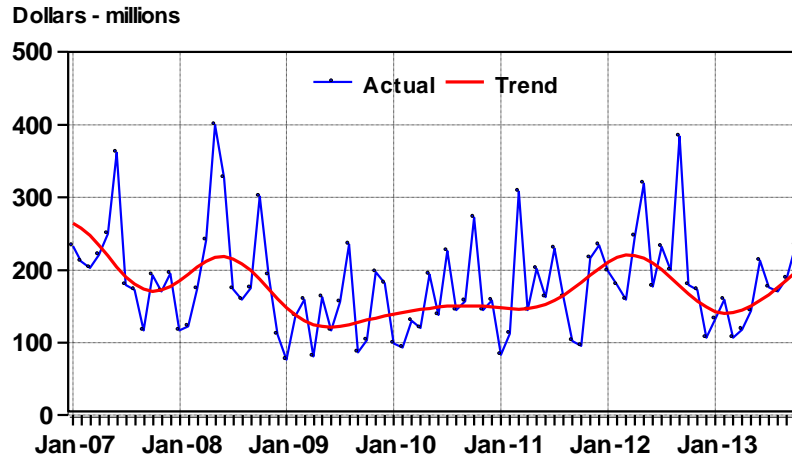
Source: Statistics Canada

Total Building Permits Issued,
Lower Mainland-Southwest Region
January 2007 - October 2013



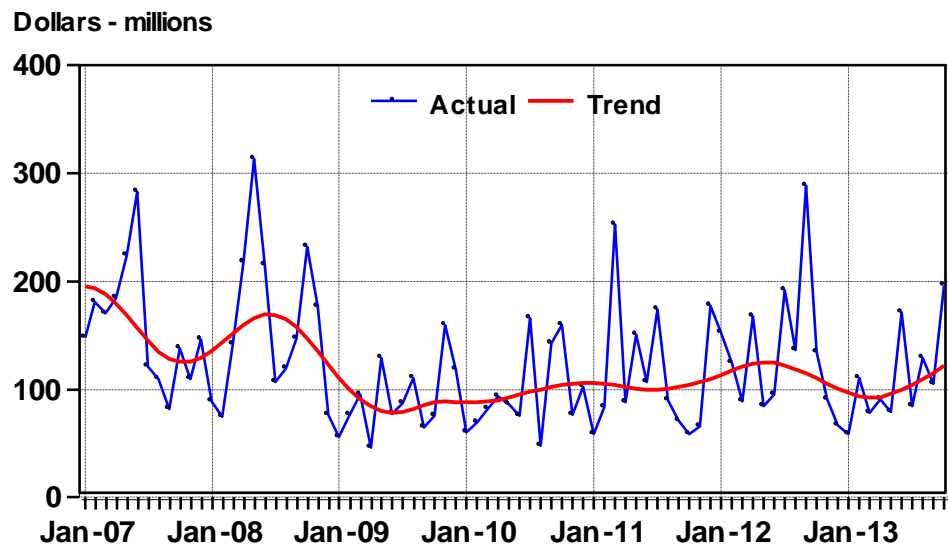
Source: Statistics Canada.

Non-residential Building Permits Issued, Lower Mainland-Southwest Region January 2007 - October 2013



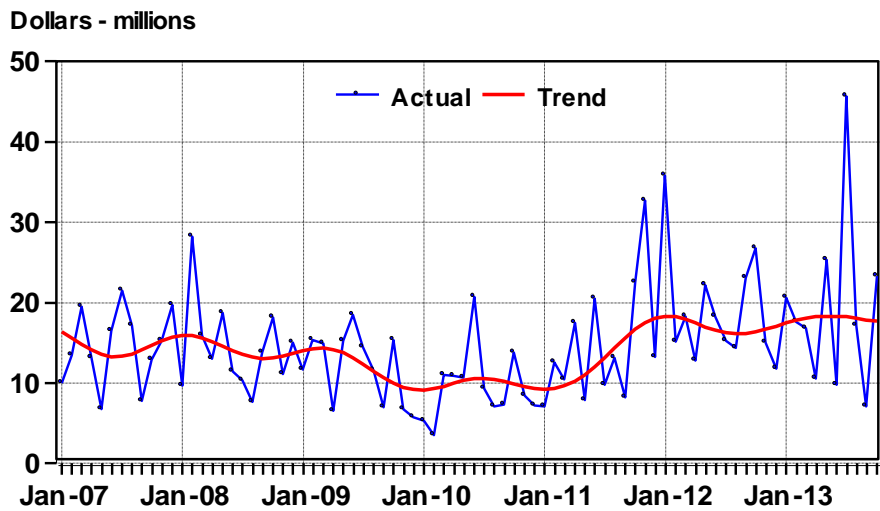
Source: Statistics Canada.

Commercial Building Permits Issued, Lower Mainland-Southwest Region January 2007 - October 2013



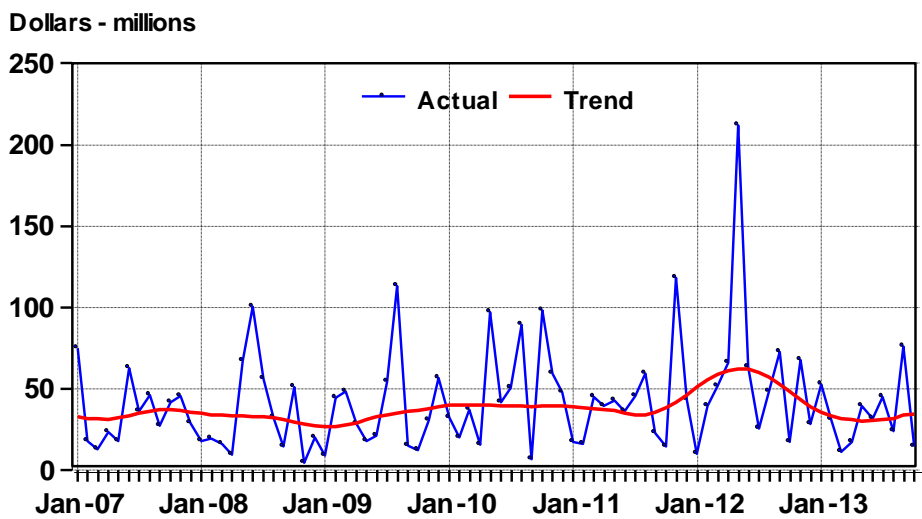
Source: Statistics Canada.

Industrial Building Permits Issued, Lower Mainland-Southwest Region January 2007 - October 2013



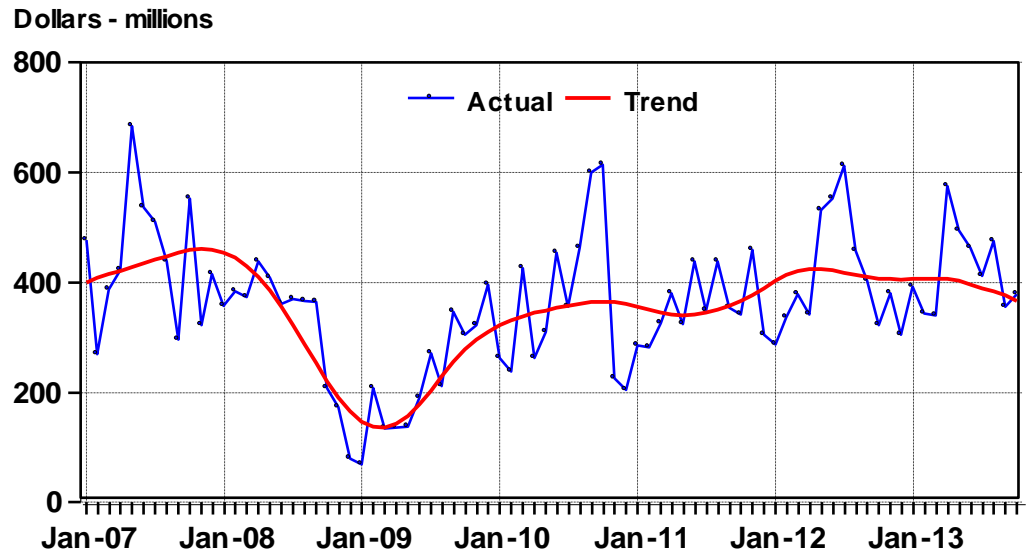
Source: Statistics Canada.

Institutional-Government Building Permits Issued, Lower Mainland-Southwest Region January 2007 - October 2013



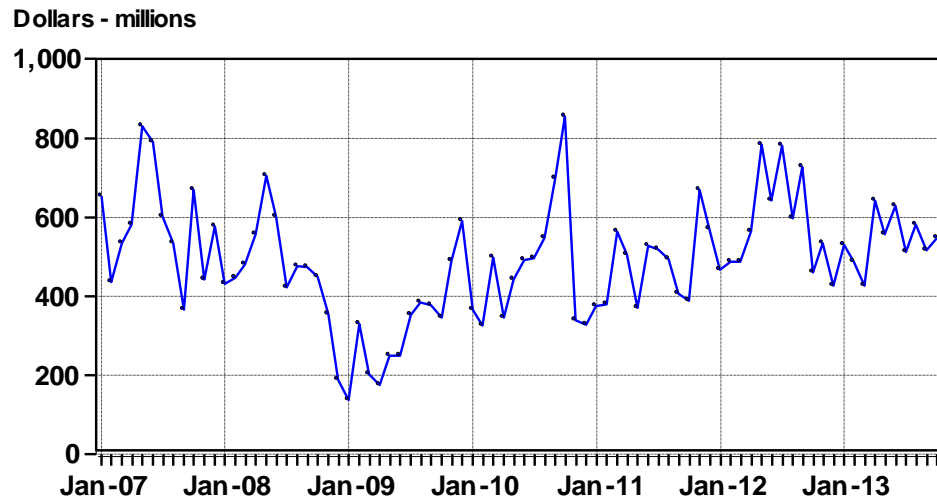
Source: Statistics Canada.

Residential Building Permits Issued, Lower Mainland-Southwest Region January 2007 - October 2013



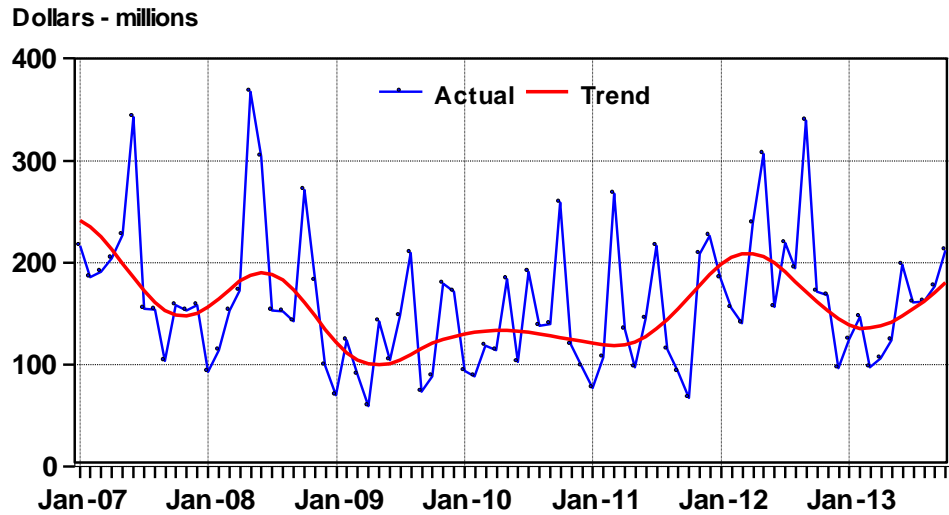
Source: Statistics Canada.

Total Building Permits Issued, Seasonally Adjusted, Metro Vancouver, January 2007 - October 2013



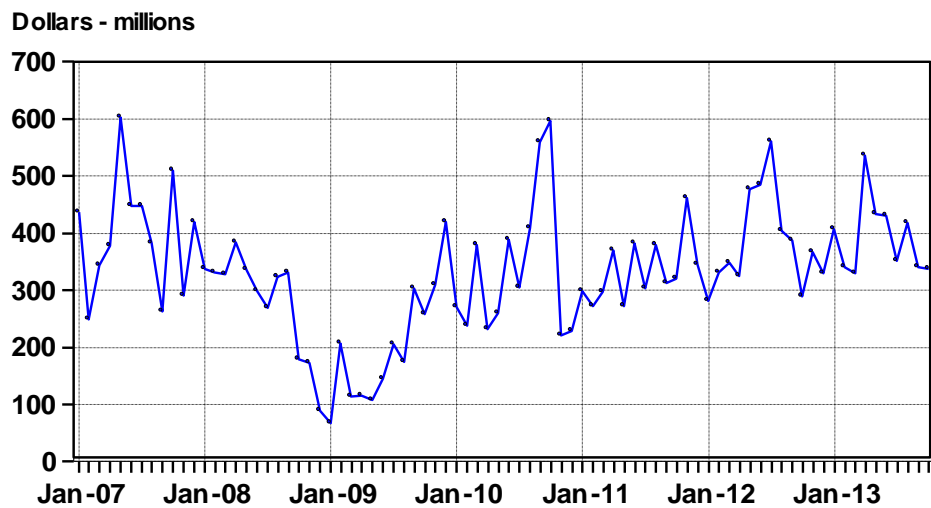
Source: Statistics Canada.

Non-residential Building Permits, Metro Vancouver January 2007 - October 2013



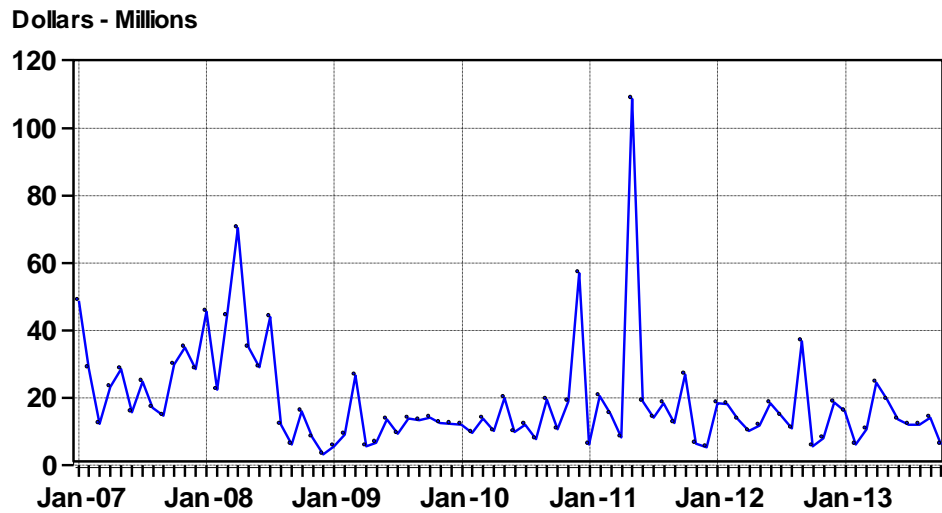
Source: Statistics Canada.

Residential Building Permits, Seasonally Adjusted, Metro Vancouver, January 2007 - October 2013



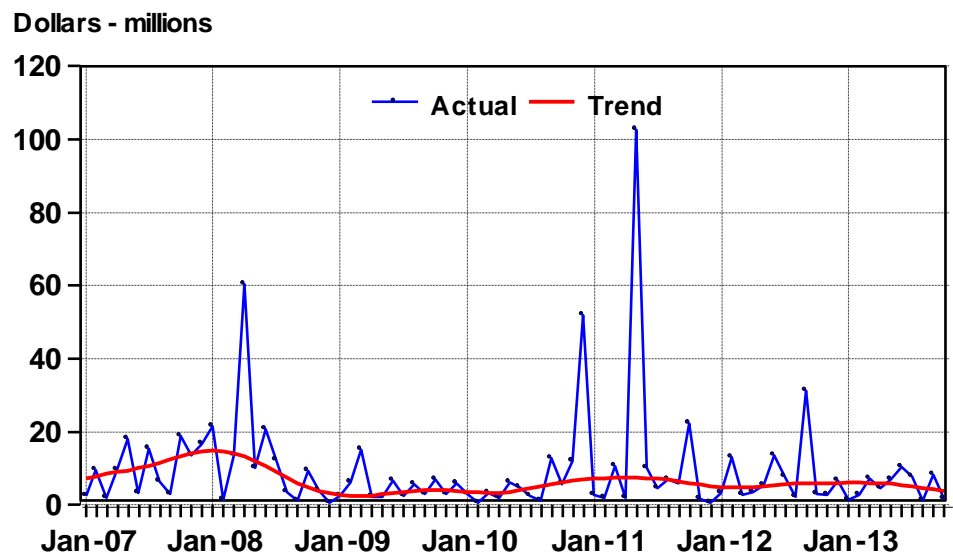
Source: Statistics Canada.

Total Building Permits Issued, Seasonally Adjusted, Abbotsford CMA January 2007 - October 2013



Source: Statistics Canada.

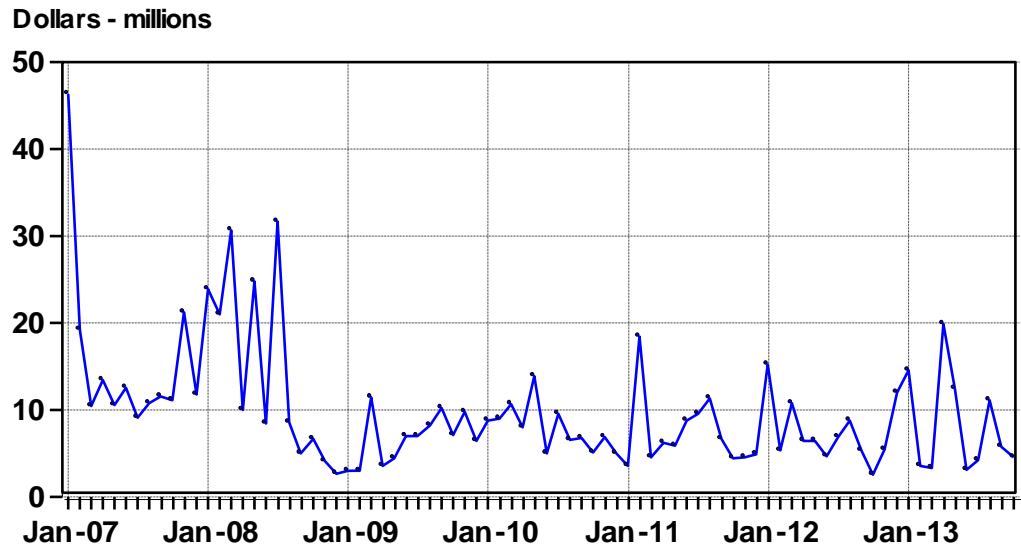
Non-residential Building Permits Issued, Abbotsford CMA January 2007 - October 2013



Source: Statistics Canada.

Residential Building Permits Issued, Seasonally Adjusted, Abbotsford CMA

January 2007 - October 2013



Source: Statistics Canada.